



OTTAWA-CARLETON
DISTRICT SCHOOL BOARD

West Central Schools Review

Proposed Attendance Boundaries, Program Offerings,
Grade Structures and Other Related Changes

WEST CENTRAL

**ACCOMMODATION
REVIEW**

Public Consultation Meeting Information Package

Wednesday, May 6th, 2026
7:00–9:00 p.m.

Gymnasium
Broadview Public School
535 Dovercourt Ave, Ottawa, ON, K2A 0T2

Table of Contents

	Page
1. Introduction & Background	1
2. Planning Considerations	1
3. The Proposal	2
4. Consultative Process and Next Steps	2-3
5. General Location Map of Study Area	4
6. Proposed Attendance Boundaries	5-8
7. Proposal and Impact by School	9-11
8. Projected Enrolments - 2027-2029	12-14
9. Additional Information	15
10. Student Journeys	16-17
11. Status Quo Attendance Boundaries	18-30
12. Historical Enrolment	31-36
13. Frequently Asked Questions	37-40

ENG	English with Core French
EFI	Early French Immersion
MFI	Middle French Immersion
ALT	Alternative Program
JK	Junior Kindergarten
SK	Senior Kindergarten
Option area	A designated geographic area where students have a choice of which school to attend.

Introduction and Background

This study has been initiated in order to realign the attendance boundaries, program offerings, and grade structures for six schools (Broadview PS, Churchill AS, Elmdale PS, Fisher Park PS, Hilson PS and Woodroffe Ave PS (Option Area)) located within the West Central Schools community.

Following the cancellation of the Elementary Program Review (EPR) and the scheduled phasing-out of the Alternative (ALT) and Middle French Immersion (MFI) programs, this review outlines a transitional framework designed to introduce a sustainable program model at Churchill Alternative School, while stabilizing student enrolment and providing equitable access to programs for the neighbouring schools in the community.

The scheduled implementation date of the revisions proposed in the review is September 2027.

Planning Considerations

The West Central Schools community comprises six core schools, consisting of various single-track and dual-track program offerings. The phase-out of the ALT and MFI programs will impact the viability of the schools operating at low enrolment, while others will be overutilized.

Specifically, the removal of the ALT program will lead to a steady decline in student numbers at Churchill AS, eventually leaving a vacant site. Similarly, the MFI phase-out will significantly reduce enrolment at Hilson PS.

Key Strategic Goals

- **Balancing Enrolment:** Stabilizing student populations as the ALT and MFI programs phase-out.
- **Program Introduction:** Launching Early French Immersion (EFI) at sites currently designated as English Program with Core French-only (ENG) to ensure long-term viability.
- **Optimizing Feeding Patterns:** Realignment of school attendance boundaries to ensure smoother transitions for students.

The Proposal

Building on the community's feedback, this updated proposal expands beyond the introduction of EFI at Churchill AS. It outlines a comprehensive plan to balance enrolment, introduce new programming across neighbouring schools, and better align feeding patterns with the boundaries proposed in this review, in order to ensure long-term stability for the entire West Central area.

Proposed Program Transitions

- **Churchill AS:** Currently an Alternative (ALT) site, Churchill AS is proposed to host a new EFI program. This will serve future students who would be directed to Broadview PS or Elmdale PS for grades JK-6, and Fisher Park PS or Broadview PS for grades 7-8.
- **Hilson PS:** Currently an ENG/MFI site, Hilson PS is proposed to introduce an EFI program to become a dual-tracked site (ENG/EFI). The EFI boundary that will be introduced will accommodate future students who would be directed to Elmdale PS for grades JK-6.

Implementation Strategy

To ensure a smooth transition and minimize disruptions for families, the district proposes the following:

- **Gradual Phase-In:** New programs will begin with JK and SK, and continue to add one grade per year. This "slow-growth" model reduces the need for current students to move between schools. At the year of implementation, all SK students will be provided with a one-time option to remain at their current school.
- **Sibling Legacy Provision:** For the 2027-2028 school year, incoming JK students who have an older sibling(s) already enrolled at a school involved in the review, will be permitted to remain together at that site.

Consultative Process and Next Steps

The purpose of the Public Consultation Meeting is to receive input from affected school communities and members of the public with regard to the presented proposal. Parents and community members can provide input in person at the meeting or through an online survey available on Engage OCDSB from May 6 to May 13, 2026.

Once input from the community is reviewed, planning staff will prepare a recommendation report to be presented to the OCDSB Supervisor. There will be an opportunity to provide feedback online regarding the final recommendation in late May.

Public feedback will be reviewed by staff. A final decision by the OCDSB Supervisor regarding the study is currently scheduled to take place in June 2026, if possible.

Community members can stay informed about the consultation by visiting Engage OCDSB (engage.ocdsb.ca). A regular email newsletter will be sent to families of students attending the schools involved in this review. Feedback is appreciated and valued throughout the entire consultative process.

Public comments and/or questions regarding the study may be sent to the following:

Email: westcentralschools.review@ocdsb.ca

Mail: West Central Schools Review
Planning Department
133 Greenbank Road
Ottawa ON
K2H 6L3

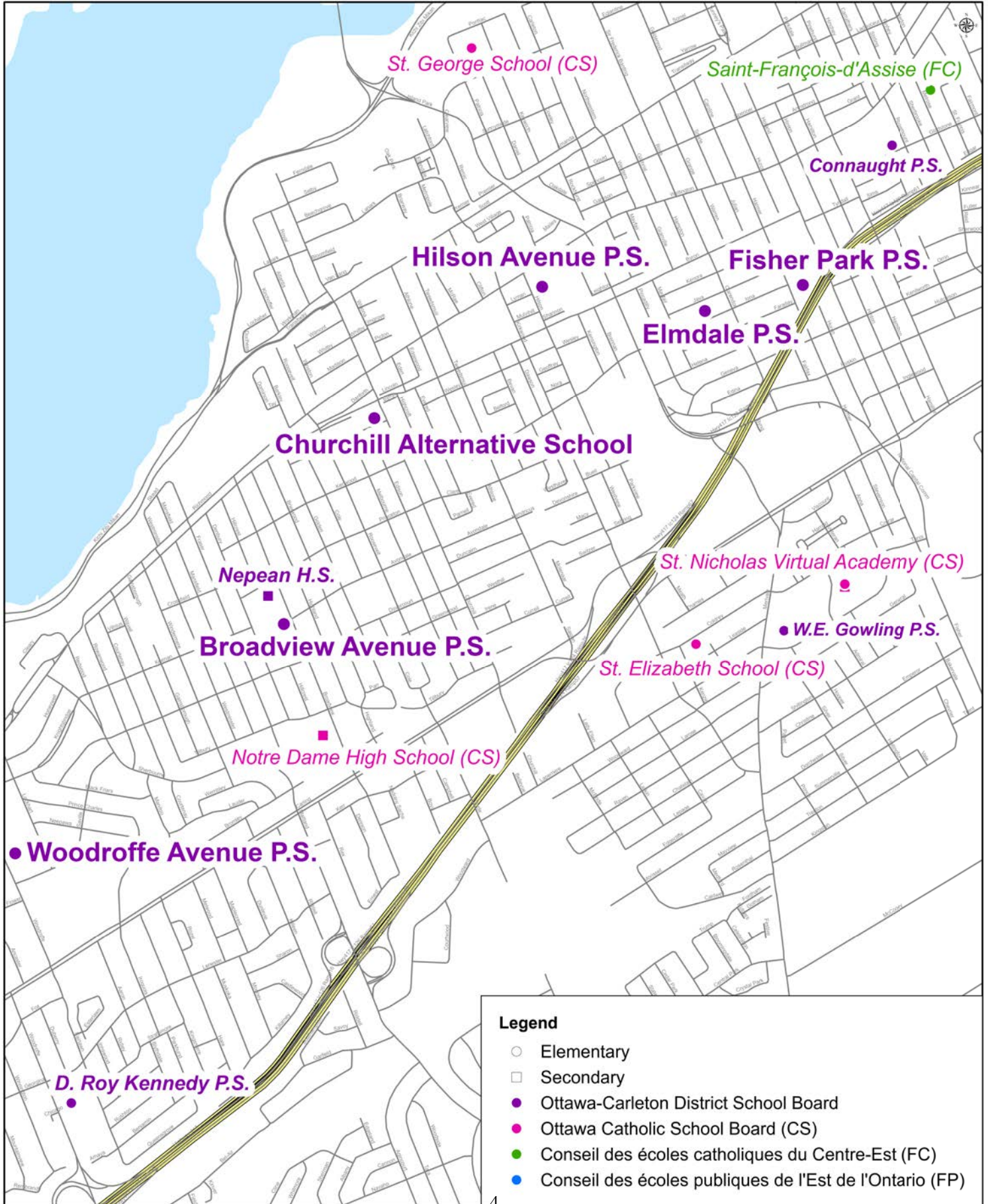
Share your
comments on
Engage OCDSB:

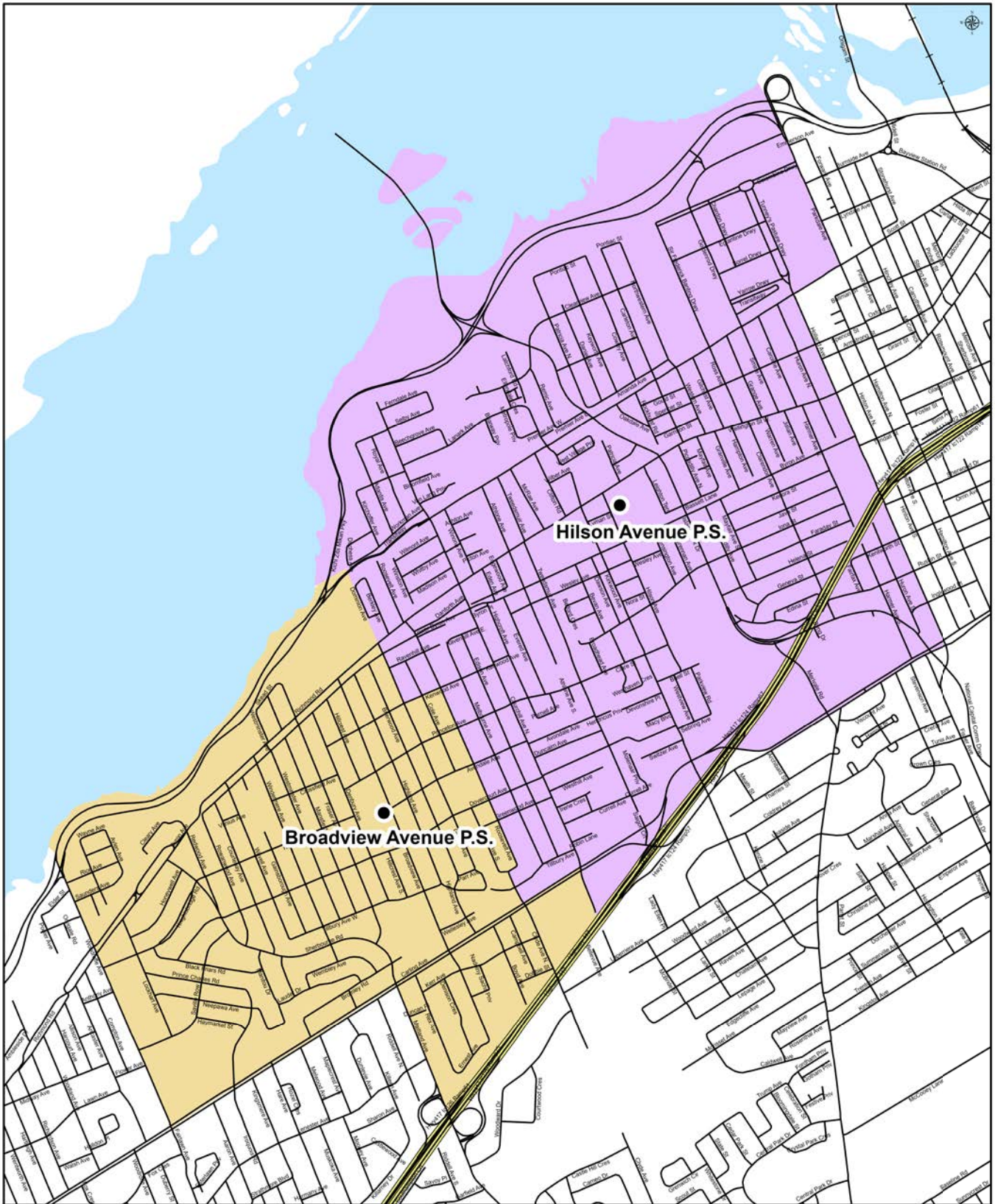




OTTAWA-CARLETON
DISTRICT SCHOOL BOARD

West Central Schools General Location Map



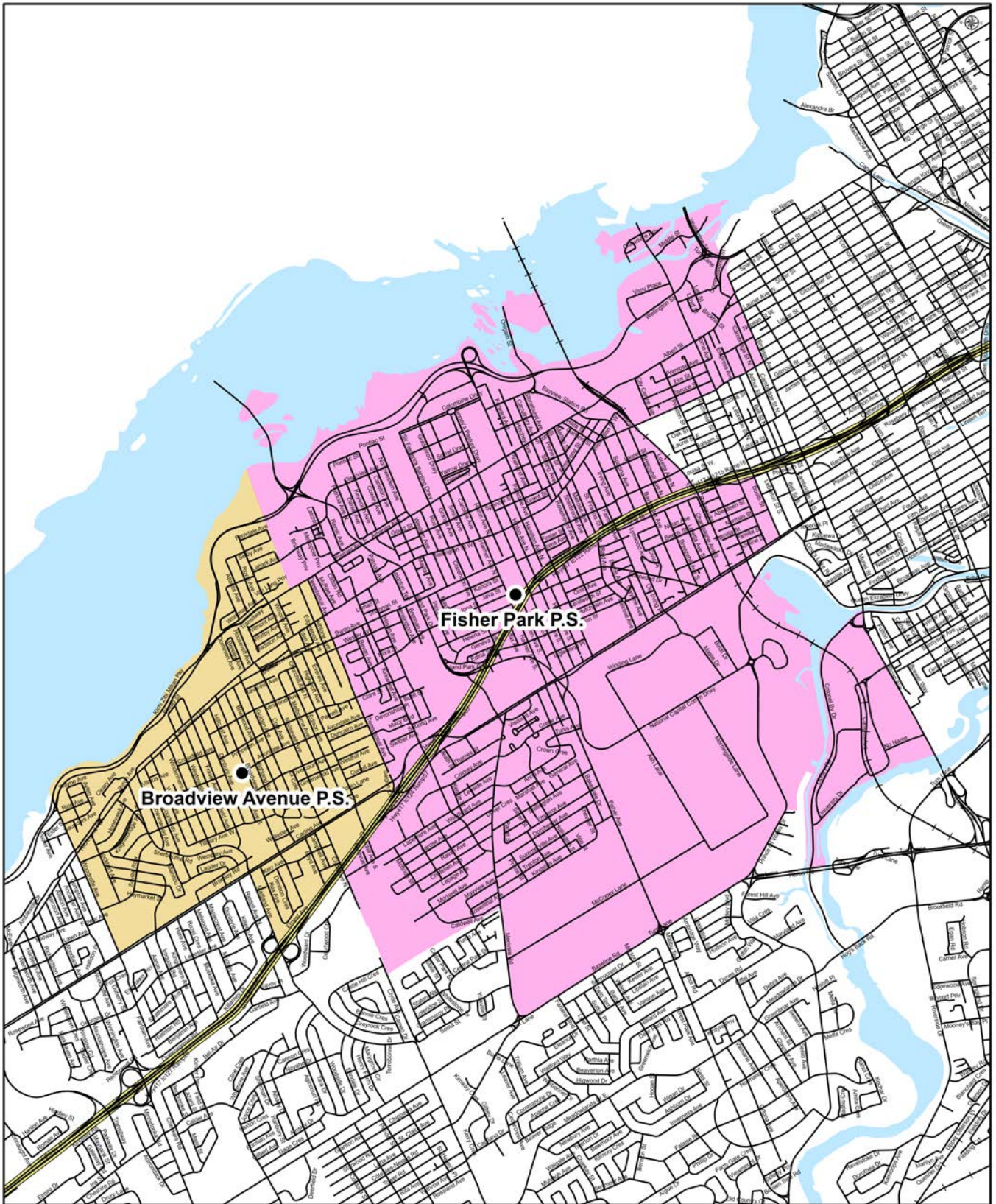


Map is for illustrative purposes only.
For further information, visit www.ocdsb.ca
2027

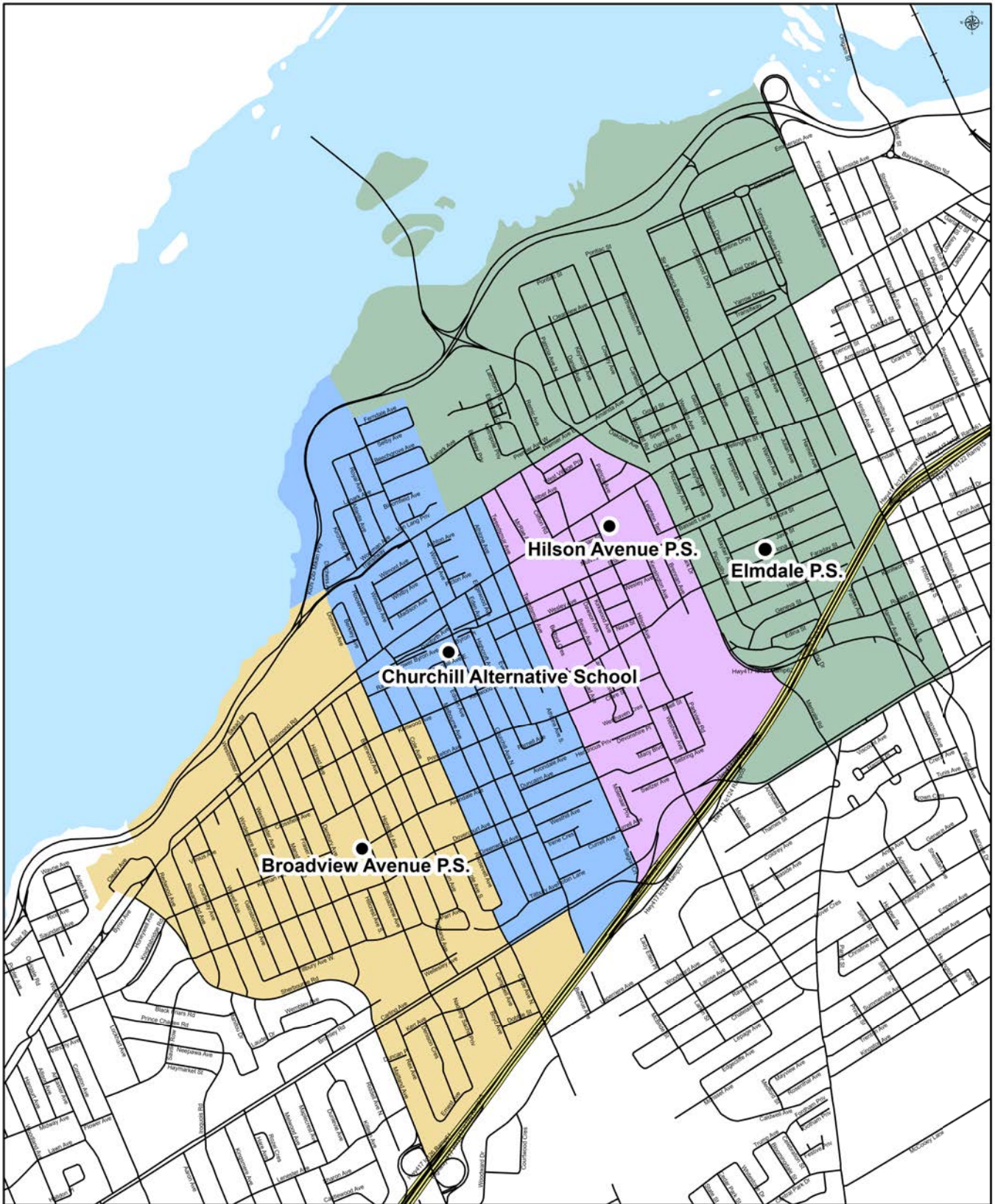


OTTAWA-CARLETON
DISTRICT SCHOOL BOARD

Proposed Attendance Boundaries
Composite Map
7 to 8
English Program with Core French Attendance Boundary



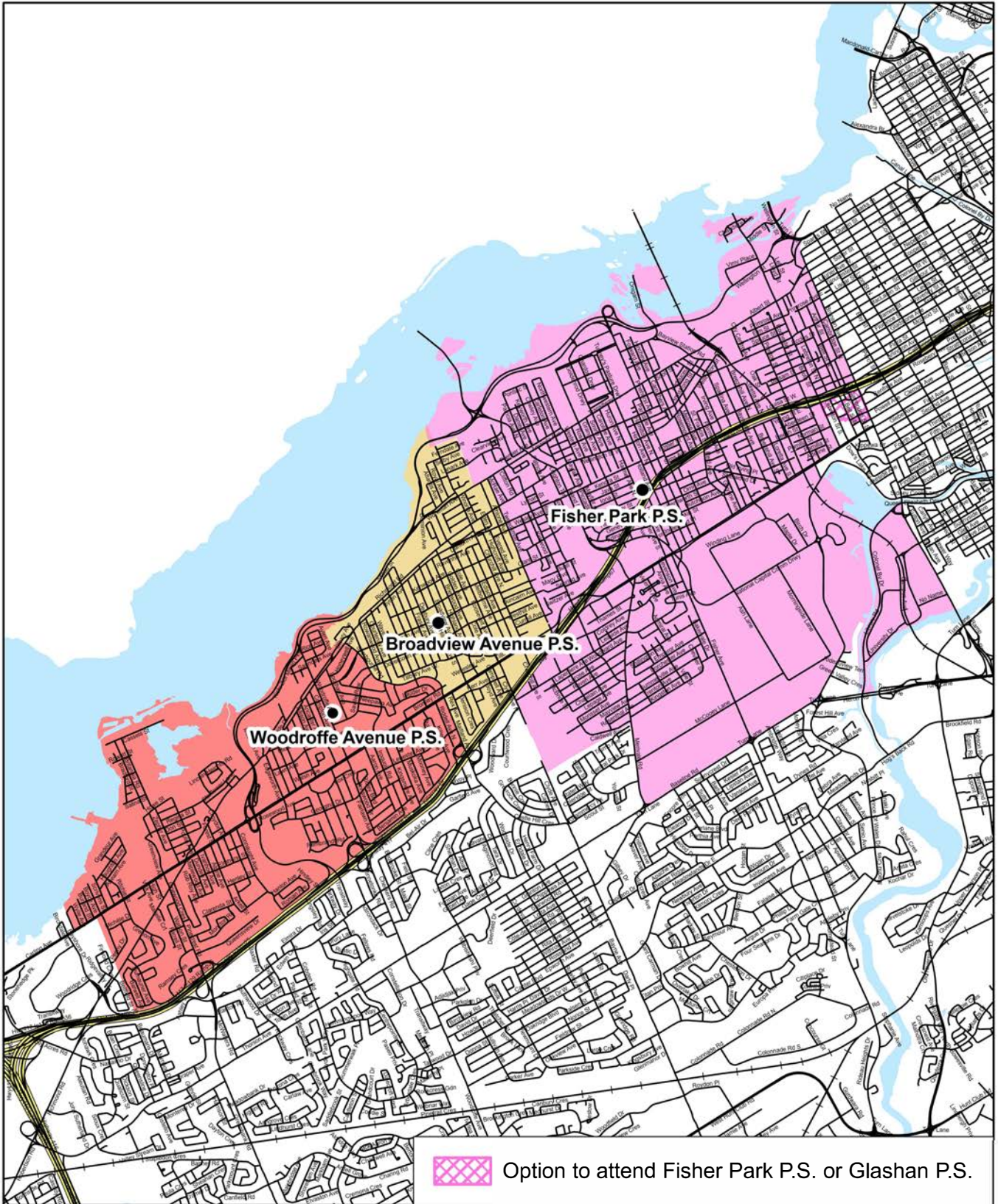
Map is for illustrative purposes only.
For further information, visit www.ocdsb.ca
2027





OTTAWA-CARLETON
DISTRICT SCHOOL BOARD

Proposed Attendance Boundaries
Composite Map
Grade 7 to 8
Early French Immersion Attendance Boundary



Map is for illustrative purposes only.
For further information, visit www.ocdsb.ca
2027

Proposal and Impact by School

Beginning in September 2027, a comprehensive realignment of school boundaries, grade structures, and program offerings will take effect for the West Central Schools Review area. This initiative impacts the following schools: Broadview Public School, Churchill Alternative School, Elmdale Public School, Fisher Park/Summit Alternative Public School, Hilson Avenue Public School and Woodroffe Avenue Public School (Option Area).

Broadview Public School

- **Boundaries:** Attendance boundaries for JK-6, 7-8 ENG and JK-8 EFI will be realigned. To minimize disruption and student movement, the existing boundaries will be phased out gradually (one grade per year, with the exception of JK and SK being phased in simultaneously in 2027).
- **One-time option:** Students who begin SK in September 2027 (those who are in JK in 2026) will be given a one-time option to remain at their current school, or to register at their newly designated school based on the proposed boundaries.
- **EFI option area:** The grade 7-8 EFI option area between Broadview Public School and Woodroffe Avenue Public School will be phasing-out of Broadview Public School starting in 2034.
- **Programs:** There will be no changes to the current programming. ENG and EFI will continue to be offered.
- **Sibling provision:** For the 2027–2028 school year, a sibling provision will be offered for incoming JK students with older siblings already attending the school. These incoming students will be permitted to enrol at the same school as their older siblings.

Churchill Alternative School

- **Programs:** Effective September 2027, the EFI program will be introduced at Churchill Alternative School. This program will be phased in by one grade per year, with the exception of JK and SK being phased in simultaneously in 2027. This is to ensure the grade 1 cohort at Churchill Alternative School in 2028 has a program to enter into.
- **Boundaries:** In alignment with current plans, the existing ALT attendance boundary will be retired gradually to avoid impacting students currently enrolled in the program, while the EFI program will be phased in simultaneously.

- **Sibling provision:** For the 2027–2028 school year, a sibling provision will be offered for incoming JK students with older siblings already attending Churchill Alternative School. These incoming students will be permitted to enrol at the same school as their older siblings.

Elmdale Public School

- **Boundaries:** The attendance boundary for JK-6 EFI will be realigned. To minimize disruption and student movement, the existing boundaries will be phased-out gradually (one grade per year, with the exception of JK and SK being phased in simultaneously in 2027).
- **One-time option:** Students who begin SK in September 2027 (those who are in JK in 2026) will be given a one-time option to remain at their current school, or to register at their newly designated school based on the proposed boundaries.
- **Program:** There will be no changes to the current programming. EFI will continue to be offered.
- **Sibling provision:** For the 2027–2028 school year, a sibling provision will be offered for incoming JK students with older siblings already attending the school. These incoming students will be permitted to enrol at the same school as their older siblings.

Fisher Park/Summit Alternative Public School

- **Boundaries:** Attendance boundaries for grade 7-8 ENG and EFI will be realigned. To minimize disruption and student movement, the existing boundaries will be phased out gradually (one grade per year starting in 2034, to align with the proposed JK-6 boundary phase-in).
- **Programs:** There will be no changes to the current programming. ENG and EFI will continue to be offered. The planned phase-out of the MFI and ALT programs remain on schedule.

Hilson Avenue Public School

- **Programs:** The school will maintain its existing ENG program, with minor adjustments to the current ENG boundary, while simultaneously phasing in the EFI program.
- **Boundaries:** Attendance boundaries for JK-6 ENG will be realigned To minimize disruption and student movement, the existing boundary will be phased out gradually (one grade per year, with the exception of JK and SK being phased in simultaneously in 2027).

- **One-time option:** Students who begin SK in September 2027 (those who are in JK in 2026) will be given a one-time option to remain at their current school, or to register at their newly designated school based on the proposed boundaries.
- **EFI boundary:** In establishing Hilson Public School’s EFI boundary, a smaller boundary was necessary to limit the impact to Elmdale Public School.
- **Sibling provision:** For the 2027–2028 school year, a sibling provision will be offered for incoming JK students with older siblings already attending the school. These incoming students will be permitted to enrol at the same school as their older siblings.

Woodroffe Avenue Public School (Option Area Only)

- **Boundaries:** The attendance boundary for grade 7-8 EFI will be realigned. To minimize disruption and student movement, the existing boundaries will be phased out gradually (one grade per year starting in 2034, to align with the proposed JK-6 boundary phase-in).
- **Programs:** There will be no changes to the current programming. EFI will continue to be offered.

West Central Schools Review

2027 Projected Enrolments

School	Capacity	Program	JK	SK	1	2	3	4	5	6	7	8	SE	Total	UF(%)
Broadview PS	806	KGTN	42	78										120	102.5%
		ENG			9	12	17	24	9	17	28	31	21	168	
		EFI			75	66	62	68	61	60	75	71		538	
		Total	42	78	84	78	79	92	70	77	103	102	21	826	
Churchill AS	387	KGTN	25	16										41	41.1%
		EFI												0	
		ALT			14	23	21	21	14	25				118	
		Total	25	16	14	23	21	21	14	25				159	
Elmdale PS	591	KGTN	36	67										103	94.6%
		EFI			68	82	79	78	76	73				456	
		Total	36	67	68	82	79	78	76	73				559	
Fisher Park PS	803	ENG									59	82	12	153	74.1%
		EFI									136	136		272	
		MFI									31	35		66	
		ALT									44	60		104	
		Total									270	313	12	595	
Hilson PS	419	KGTN	59	28										87	70.6%
		ENG			31	26	20	9	7	16			26	135	
		EFI												0	
		MFI						27	17	30				74	
		Total	59	28	31	26	20	36	24	46			26	296	
Woodroffe Ave PS	568	KGTN	33	44										77	94.0%
		EFI			52	51	45	47	46	55	68	76	17	457	
		Total	33	44	52	51	45	47	46	55	68	76	17	534	

Utilization (UF%) = Total enrolment/capacity.

Programs: ENG = English Program with Core French, EFI = Early French Immersion, MFI = Middle French Immersion, ALT = Alternative Program, SE = Special Education

West Central Schools Review

2028 Projected Enrolments

School	Capacity	Program	JK	SK	1	2	3	4	5	6	7	8	SE	Total	UF(%)
Broadview PS	806	KGTN	43	52										95	100.6%
		ENG			9	13	14	25	26	11	32	31	21	182	
		EFI			75	73	67	60	67	57	59	76		534	
		Total	43	52	84	86	81	85	93	68	91	107	21	811	
Churchill AS	387	KGTN	26	30										56	42.6%
		EFI			16									16	
		ALT				14	23	21	21	14				93	
		Total	26	30	16	14	23	21	21	14				165	
Elmdale PS	591	KGTN	38	39										77	85.8%
		EFI			59	75	67	77	76	76				430	
		Total	38	39	59	75	67	77	76	76				507	
Fisher Park PS	803	ENG									72	62	12	146	74.7%
		EFI									158	134		292	
		MFI									36	32		68	
		ALT									52	42		94	
		Total									318	270	12	600	
Hilson PS	419	KGTN	61	60										121	77.3%
		ENG			19	36	27	8	9	7			26	132	
		EFI			10									10	
		MFI						19	24	18				61	
		Total	61	60	29	36	27	27	33	25			26	324	
Woodroffe Ave PS	568	KGTN	45	36										81	93.1%
		EFI			47	50	47	42	48	47	84	66	17	448	
		Total	45	36	47	50	47	42	48	47	84	66	17	529	

Utilization (UF%) = Total enrolment/capacity.

Programs: ENG = English Program with Core French, EFI = Early French Immersion, MFI = Middle French Immersion, ALT = Alternative Program, SE = Special Education

West Central Schools Review

2029 Projected Enrolments

School	Capacity	Program	JK	SK	1	2	3	4	5	6	7	8	SE	Total	UF(%)
Broadview PS	806	KGTN	42	54										96	97.0%
		ENG			11	13	15	20	27	27	20	36	21	190	
		EFI			45	73	74	65	60	63	56	60		496	
		Total	42	54	56	86	89	85	87	90	76	96	21	782	
Churchill AS	387	KGTN	31	31										62	48.8%
		EFI			32	16								48	
		ALT					14	23	21	21				79	
		Total	31	31	32	16	14	23	21	21				189	
Elmdale PS	591	KGTN	42	41										83	80.5%
		EFI			45	60	73	64	77	74				393	
		Total	42	41	45	60	73	64	77	74				476	
Fisher Park PS	803	ENG									60	77	12	149	75.8%
		EFI									159	156		315	
		MFI									22	37		59	
		ALT									36	50		86	
		Total									277	320	12	609	
Hilson PS	419	KGTN	59	62										121	85.4%
		ENG			23	23	38	27	9	10			26	156	
		EFI			30	10								40	
		MFI							16	25				41	
		Total	59	62	53	33	38	27	25	35			26	358	
Woodroffe Ave PS	568	KGTN	41	50										91	94.7%
		EFI			39	45	46	44	42	49	82	83	17	447	
		Total	41	50	39	45	46	44	42	49	82	83	17	538	

Utilization (UF%) = Total enrolment/capacity.

Programs: ENG = English Program with Core French, EFI = Early French Immersion, MFI = Middle French Immersion, ALT = Alternative Program, SE = Special Education

ADDITIONAL INFORMATION

Student Journey By Scenario - 2027 Implementation

***PLEASE NOTE*:**

1. The MFI program will be phased-out as previously approved, one grade per year, the last year of grade 4 intake being in September 2028.
2. The Alternative program will be phased-out as previously approved, one grade per year, the last year of JK intake was in September 2025.
3. Attendance boundaries in this review are being phased-in one year at a time, with the exception of the JK-SK being phased in simultaneously as a KINDER population. All SK's upon 2027 (2026 JK's) will be given the one-time option to remain at their current school, should they wish to stay, or register at their newly designated school based on the proposed boundaries.
 - The Grade 7-8 proposed attendance boundaries do not begin phase-in until 2034.

1. Current Students Registered in the Board as of 2026

Any SK-8 student at the time of implementation (September 2027), that attend any of the 6 impacted schools (Broadview PS, Churchill AS, Elmdale PS, Hilson PS, Fisher Park/Summit PS, Woodroffe Avenue PS) in the ENG, EFI, MFI, ALT programs, ARE NOT impacted as a result of the review.

- 2027 SK's that fall within a newly proposed boundary, can choose to remain at their current school until they reach the school's full grade complement, through a one-time option.

2. JK Students With Older Siblings (i.e. one-time option)

A student residing in one of the newly proposed boundaries, that is in JK in 2027, that has an older sibling currently enrolled in one of the 6 impacted schools, is permitted to attend the school their sibling goes to, until they reach the school's full grade complement, or can register at their newly designated school based on the proposed boundaries.

3. Younger Siblings Not Yet of School Age as of 2027

A student residing in one of the newly proposed boundaries, that will enter into the Board AFTER the year of implementation (2027), that has an older sibling enrolled in one of the 6 impacted schools, that wishes to remain with their older sibling, should apply for a Cross-Boundary Transfer through the Board's Cross-Boundary Transfer process (Policy P.077.PLG).

4. New Students / Students Without an Older Sibling

A student that is not yet registered within the OCDSB, residing in one of the newly proposed boundaries, that is in JK or SK in 2027, that does NOT have an older sibling enrolled at one of the 6 impacted schools, attends their newly designated school based on their address.

5. Churchill AS JK's as of 2026

If you are a student that enrolled at Churchill AS as a JK in 2026 (i.e. you will be in SK in 2027, and Grade 1 in 2028), an EFI program will be available at Churchill AS. If you do not wish to be in an EFI program, you will be directed to the newly proposed ENG school based on your home address.

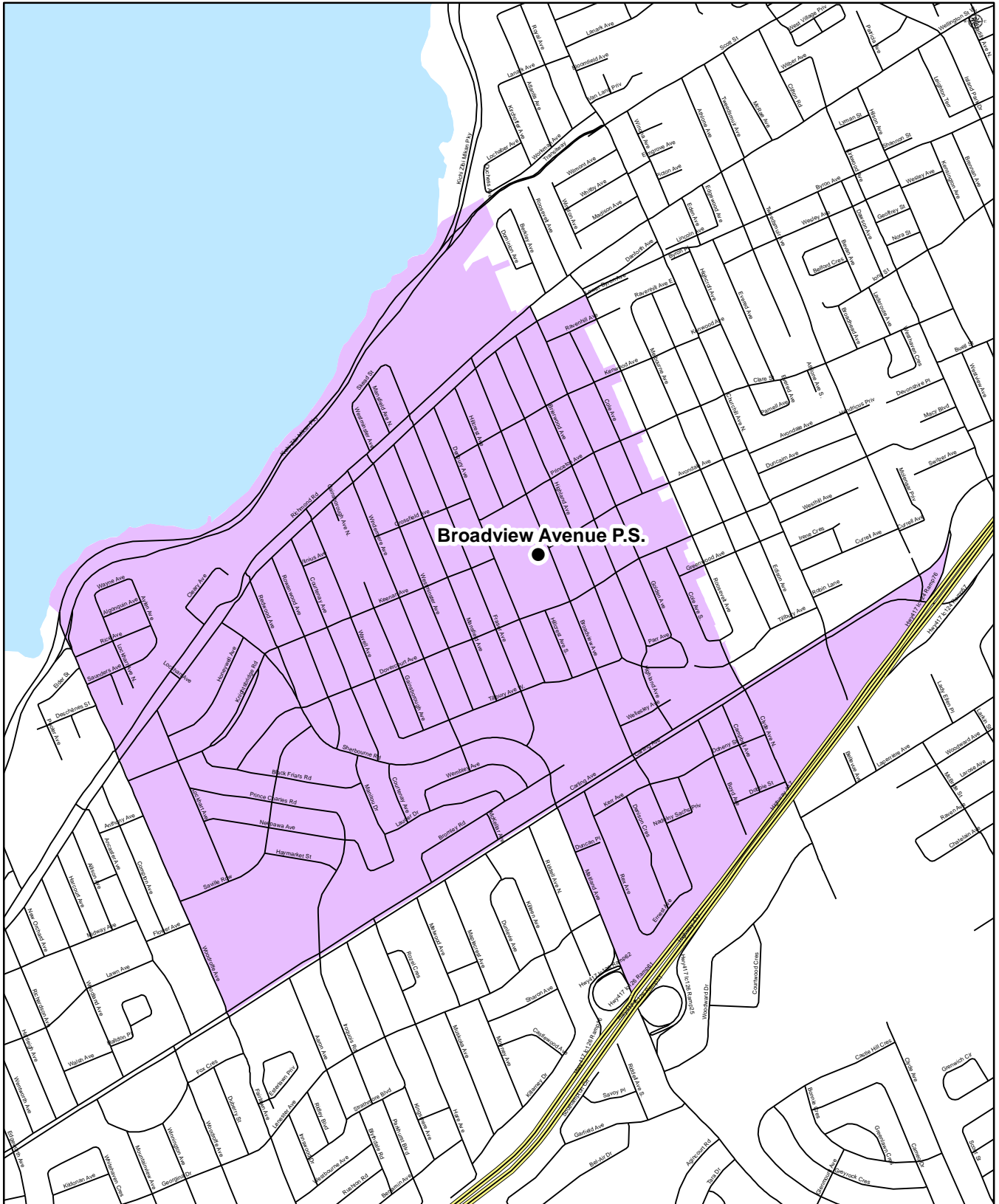


OTTAWA-CARLETON
DISTRICT SCHOOL BOARD

BROADVIEW AVENUE PUBLIC SCHOOL

Junior Kindergarten to Grade 6

English Program with Core French Attendance Boundary

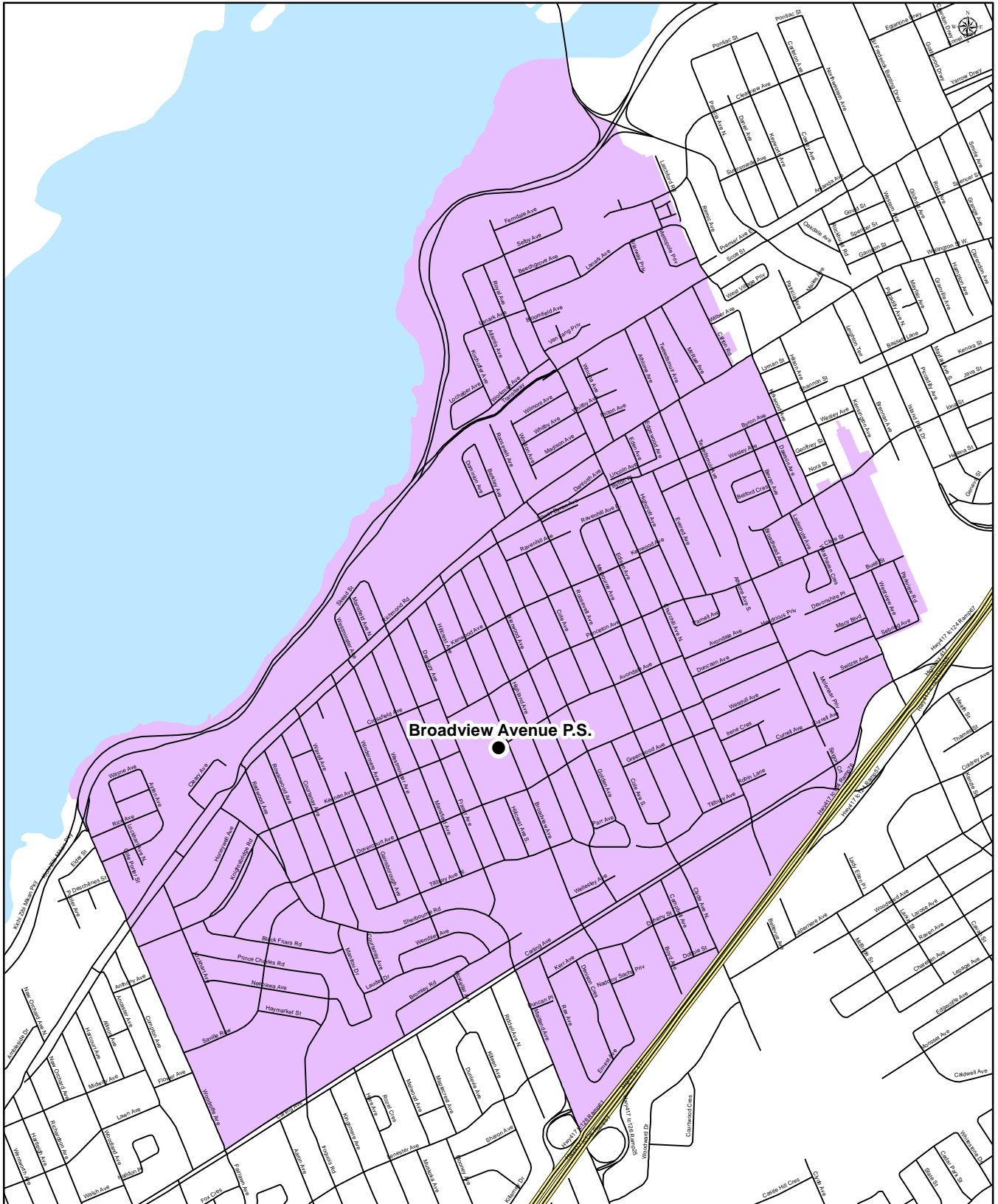


Broadview Avenue Public School
535 Dovercourt Ave
Ottawa, Ontario
K2A 0T2
(613) 728-1721

Map is for illustrative purposes only.
For further information, visit www.ocdsb.ca
September 2024



BROADVIEW AVENUE PUBLIC SCHOOL
Grade 7 to 8
English Program with Core French Attendance Boundary



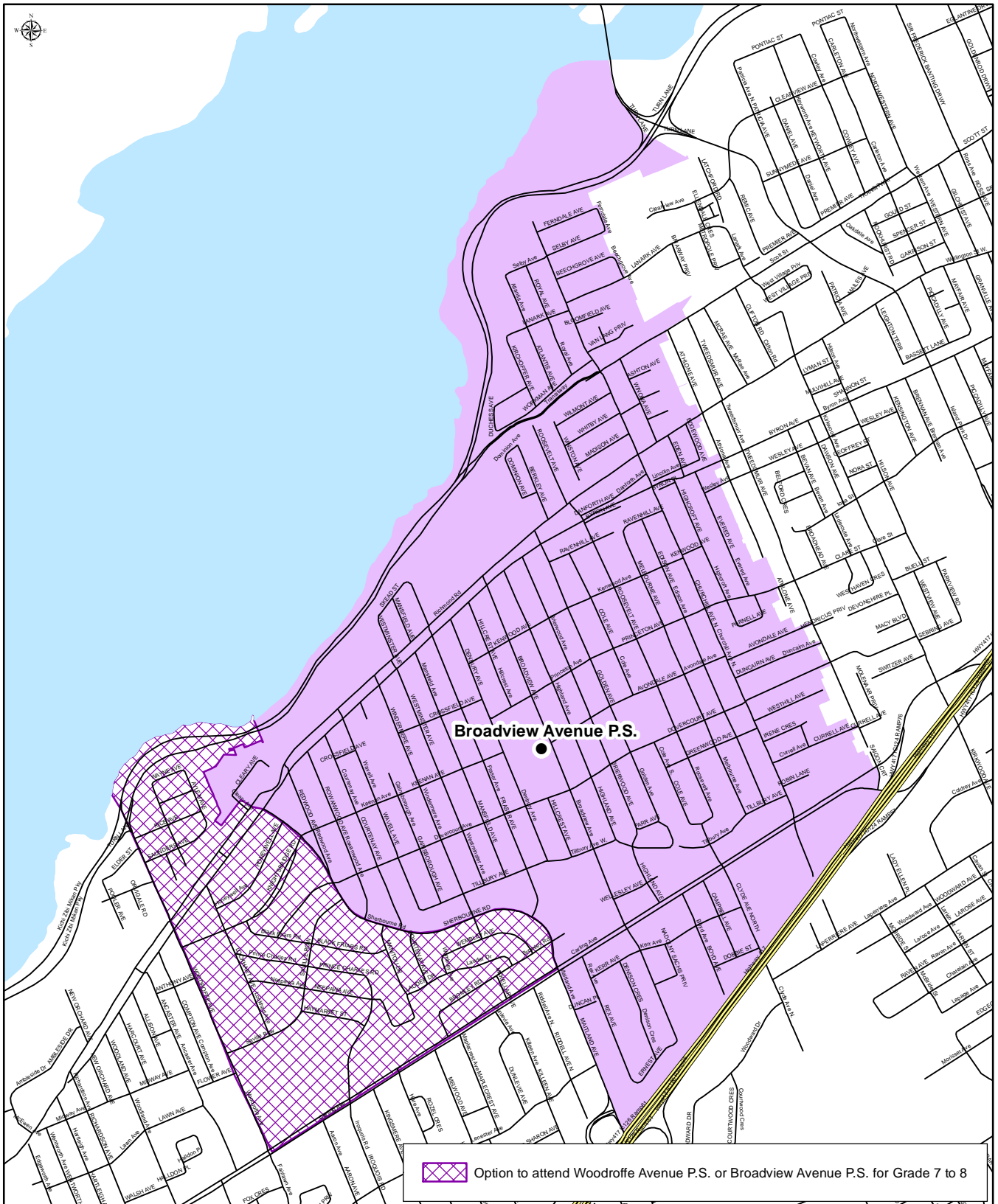
Broadview Avenue Public School
535 Dovercourt Ave
Ottawa, Ontario
K2A 0T2
(613) 728-1721

Map is for illustrative purposes only.
For further information, visit www.ocdsb.ca
September 2024

BROADVIEW AVENUE PUBLIC SCHOOL

Junior Kindergarten to Grade 8

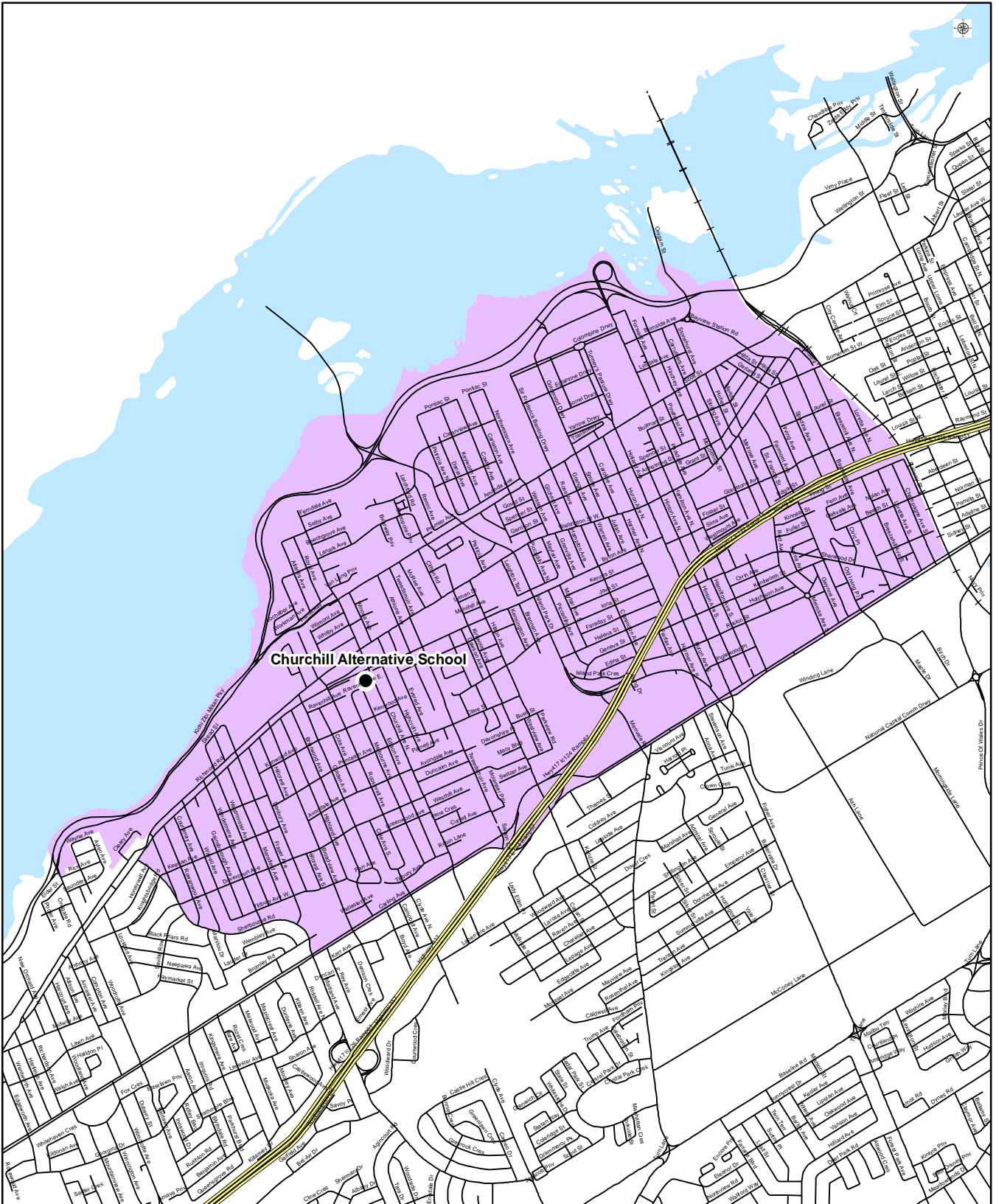
Early French Immersion Attendance Boundary



Broadview Avenue Public School
535 Dovercourt Ave
Ottawa, Ontario
K2A 0T2
(613) 728-1721

Map is for illustrative purposes only.
For further information, visit www.ocdsb.ca
September 2024

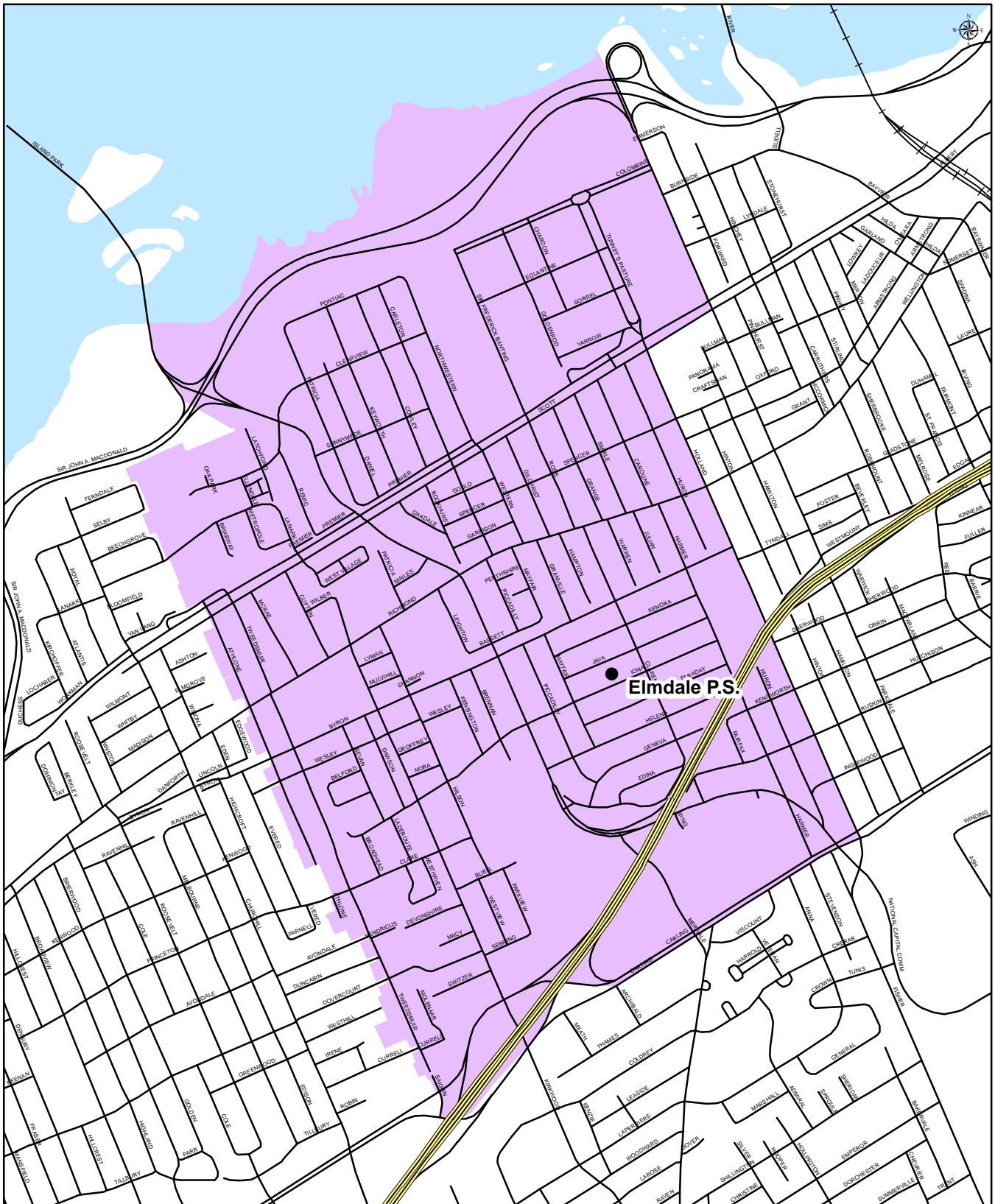
CHURCHILL ALTERNATIVE SCHOOL
 Junior Kindergarten to Grade 6
 Alternative Program with Core French Attendance Boundary



Churchill Alternative School
 345 Ravenhill Avenue
 Ottawa, Ontario
 K2A 0J5
 (613) 722-4474

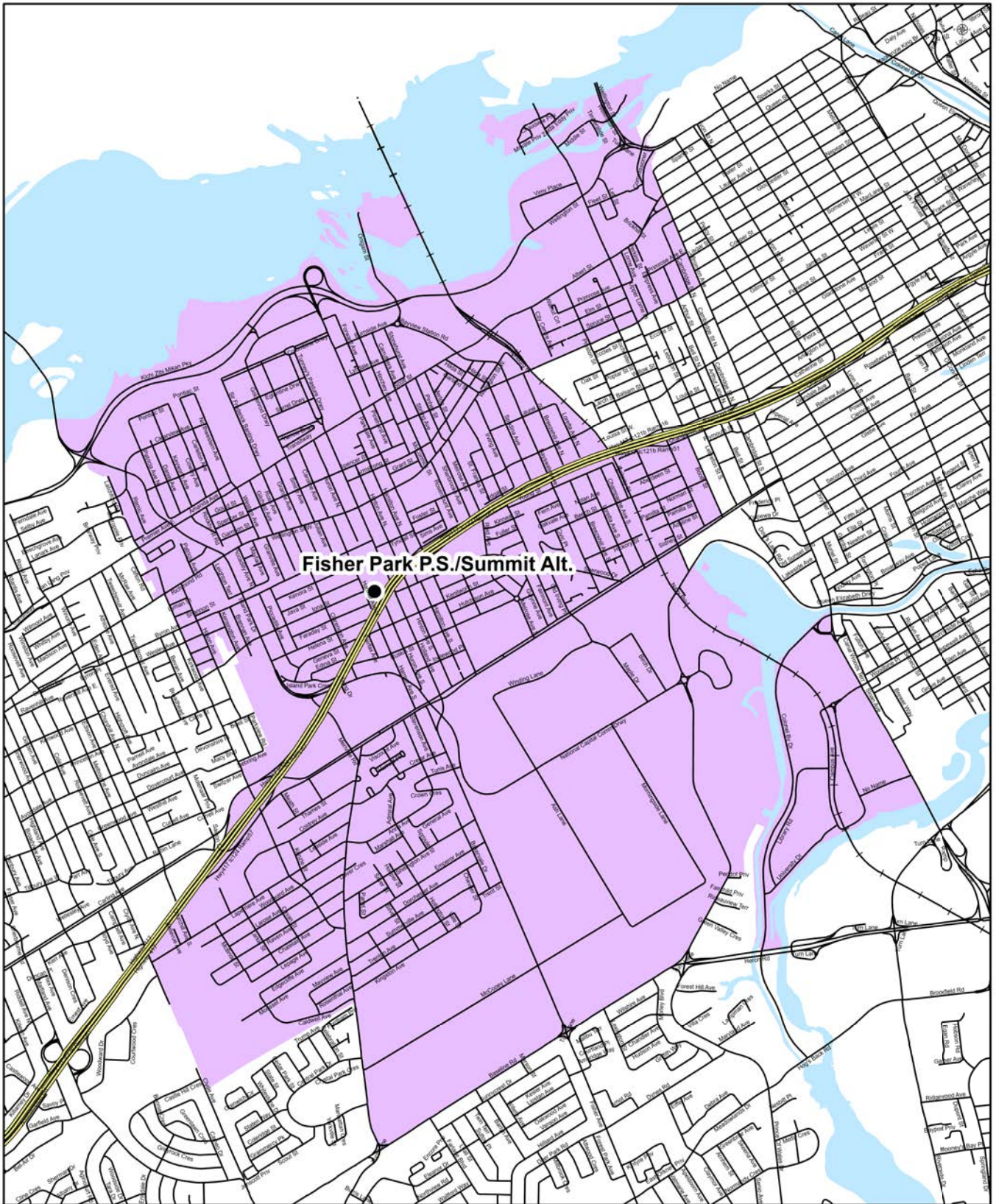
Map is for illustrative purposes only.
 For further information, visit www.ocdsb.ca
 September 2024

ELMDALE PUBLIC SCHOOL
Junior Kindergarten to Grade 6
Early French Immersion Attendance Boundary



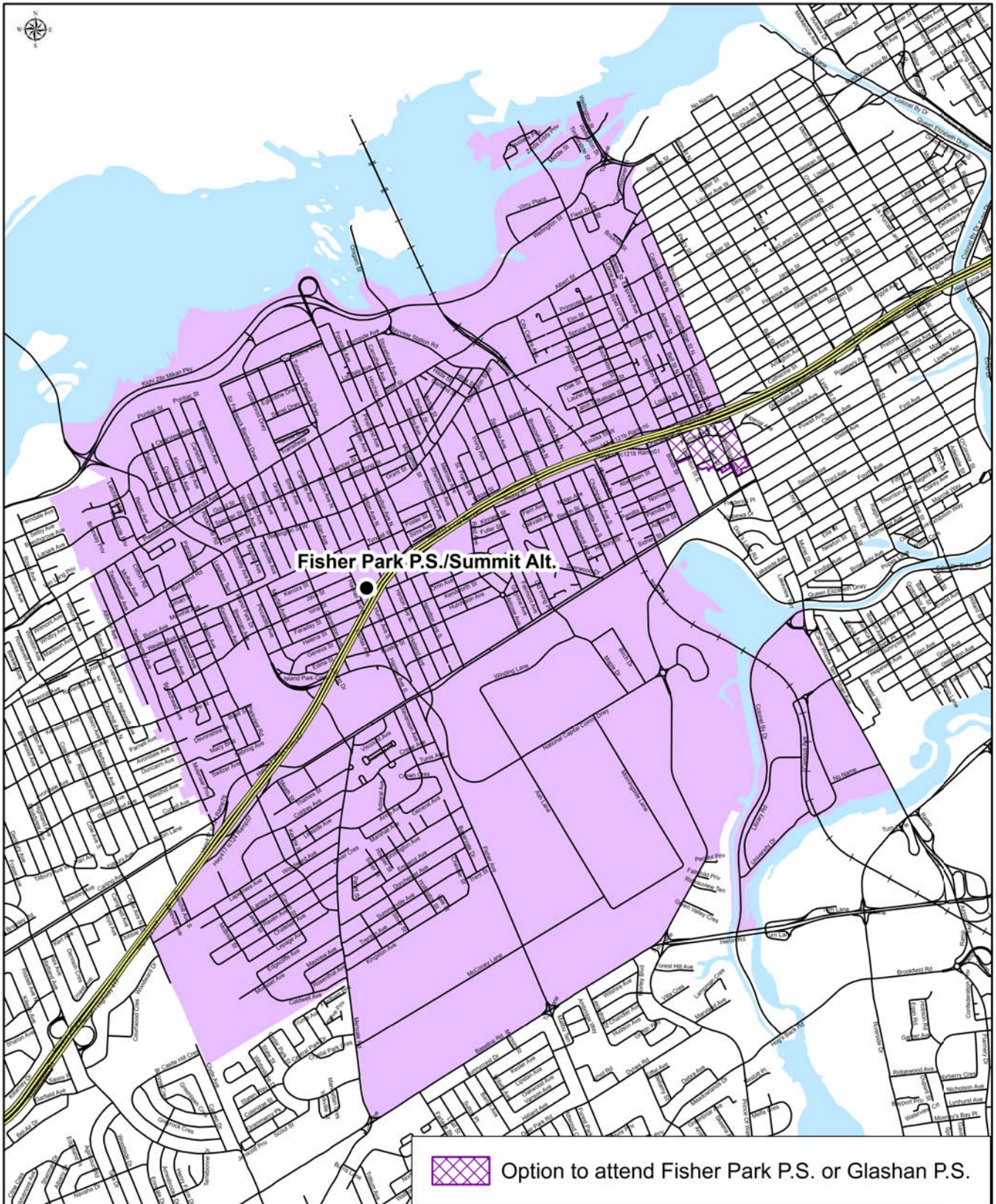
Elmdale Public School
49 Iona Street
Ottawa, Ontario
K1Y 3L9
(613) 728-4653

Map is for illustrative purposes only.
For further information, visit www.ocdsb.ca
September 2016



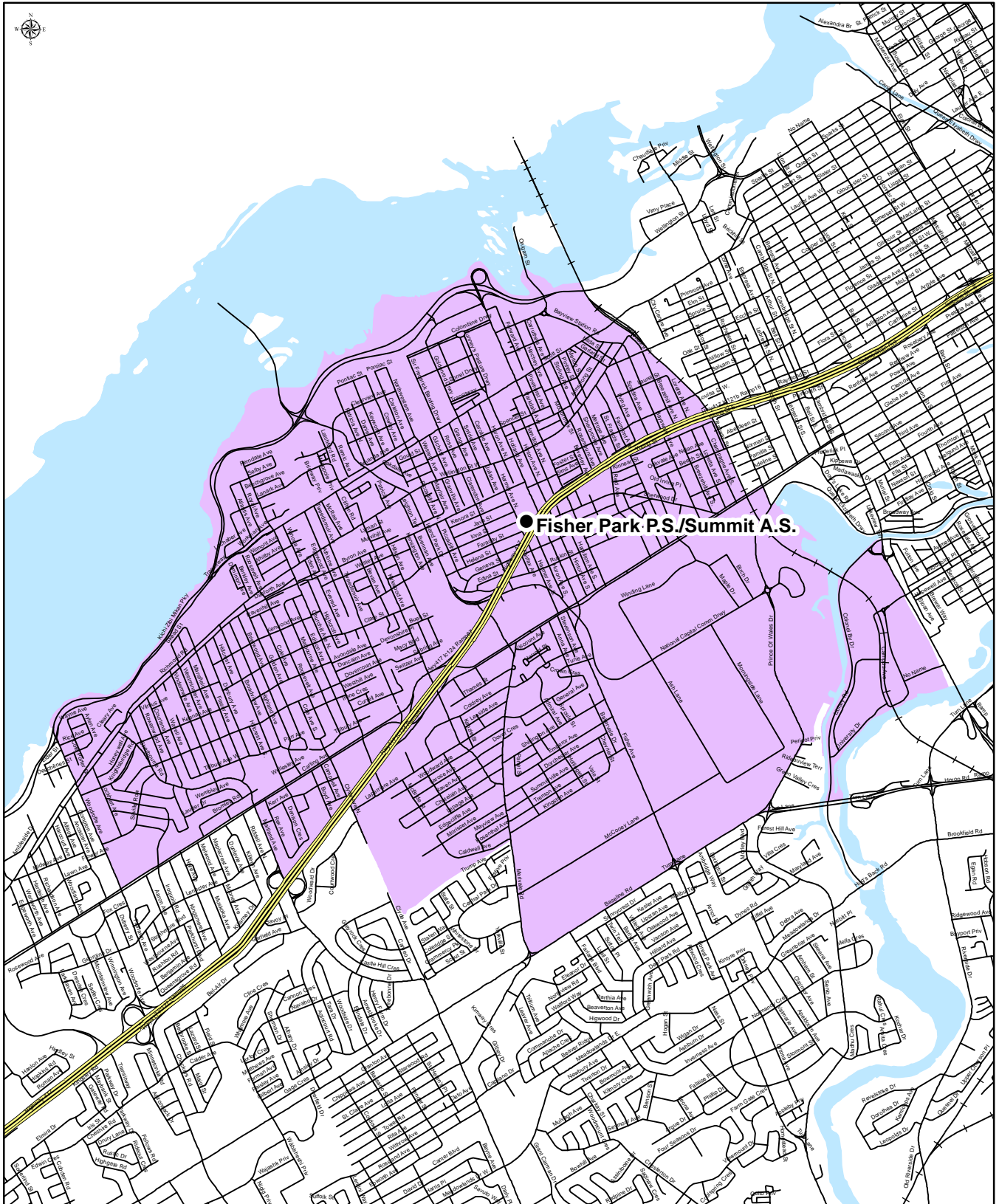
Fisher Park Public School
250 Holland Avenue
Ottawa, Ontario
K1Y 0Y6
(613) 729-5054

Map is for illustrative purposes only.
For further information, visit www.ocdsb.ca
September 2025



Fisher Park Public School
250 Holland Avenue
Ottawa, Ontario
K1Y 0Y6
(613) 729-5054

Map is for illustrative purposes only.
For further information, visit www.ocdsb.ca
September 2025



Fisher Park Public School
250 Holland Avenue
Ottawa, Ontario
K1Y 0Y6
(613) 729-5054

Map is for illustrative purposes only.
For further information, visit www.ocdsb.ca
September 2024

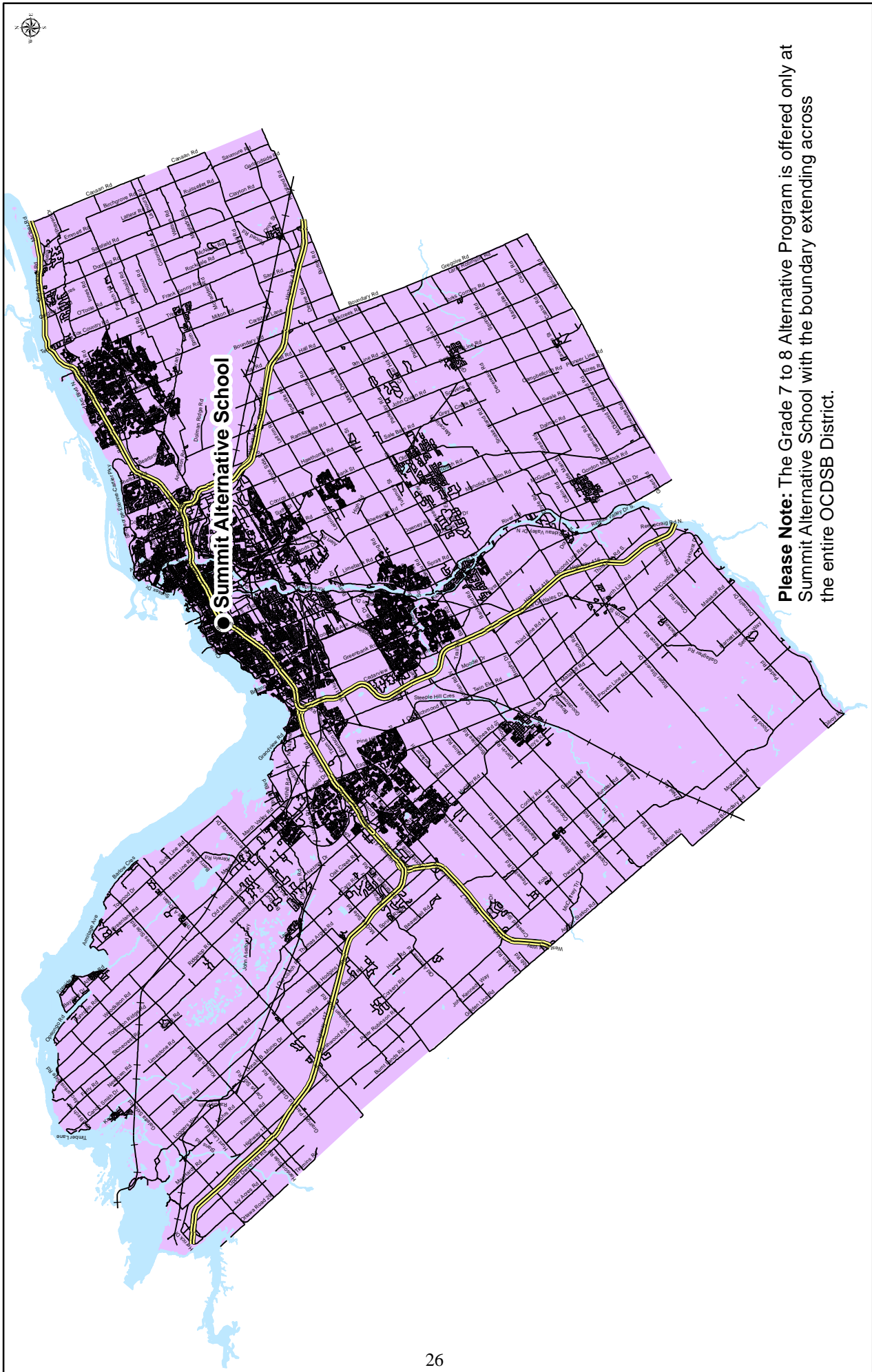


SUMMIT ALTERNATIVE SCHOOL

Grade 7 to 8

Alternative Program with Core French Attendance Boundary

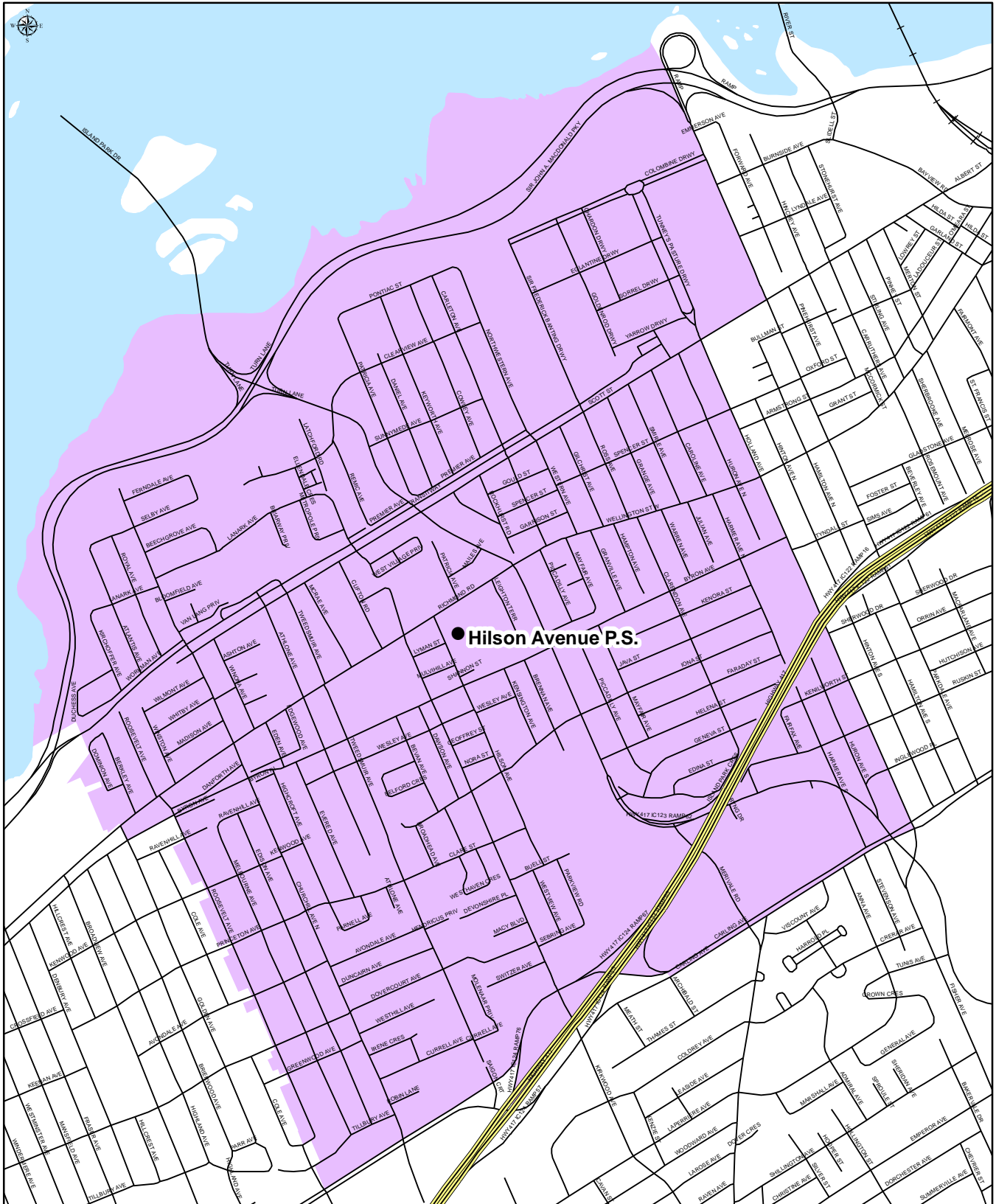
OTTAWA-CARLETON
DISTRICT SCHOOL BOARD



Please Note: The Grade 7 to 8 Alternative Program is offered only at Summit Alternative School with the boundary extending across the entire OCDSB District.

Summit Alternative School
250 Holland Ave
Ottawa, Ontario
K1Y 0Y6
(613) 729-5054

Map is for illustrative purposes only.
For further information, visit www.ocdsb.ca
September 2024

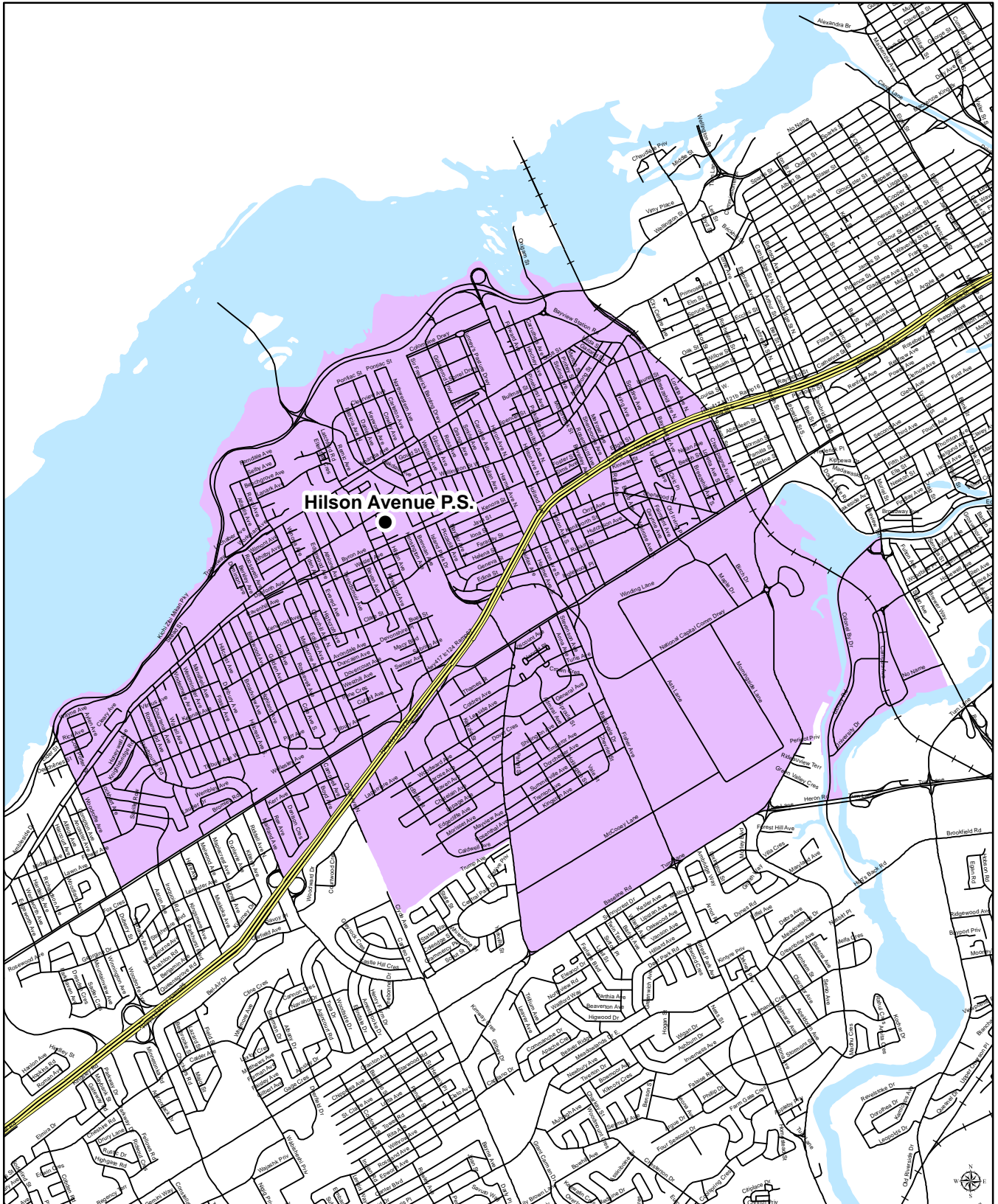


Hilson Avenue Public School
 407 Hilson Avenue
 Ottawa, Ontario
 K1Y 6B9
 (613) 728-4607

Map is for illustrative purposes only.
 For further information, visit www.ocdsb.ca
 September 2017

HILSON AVENUE PUBLIC SCHOOL

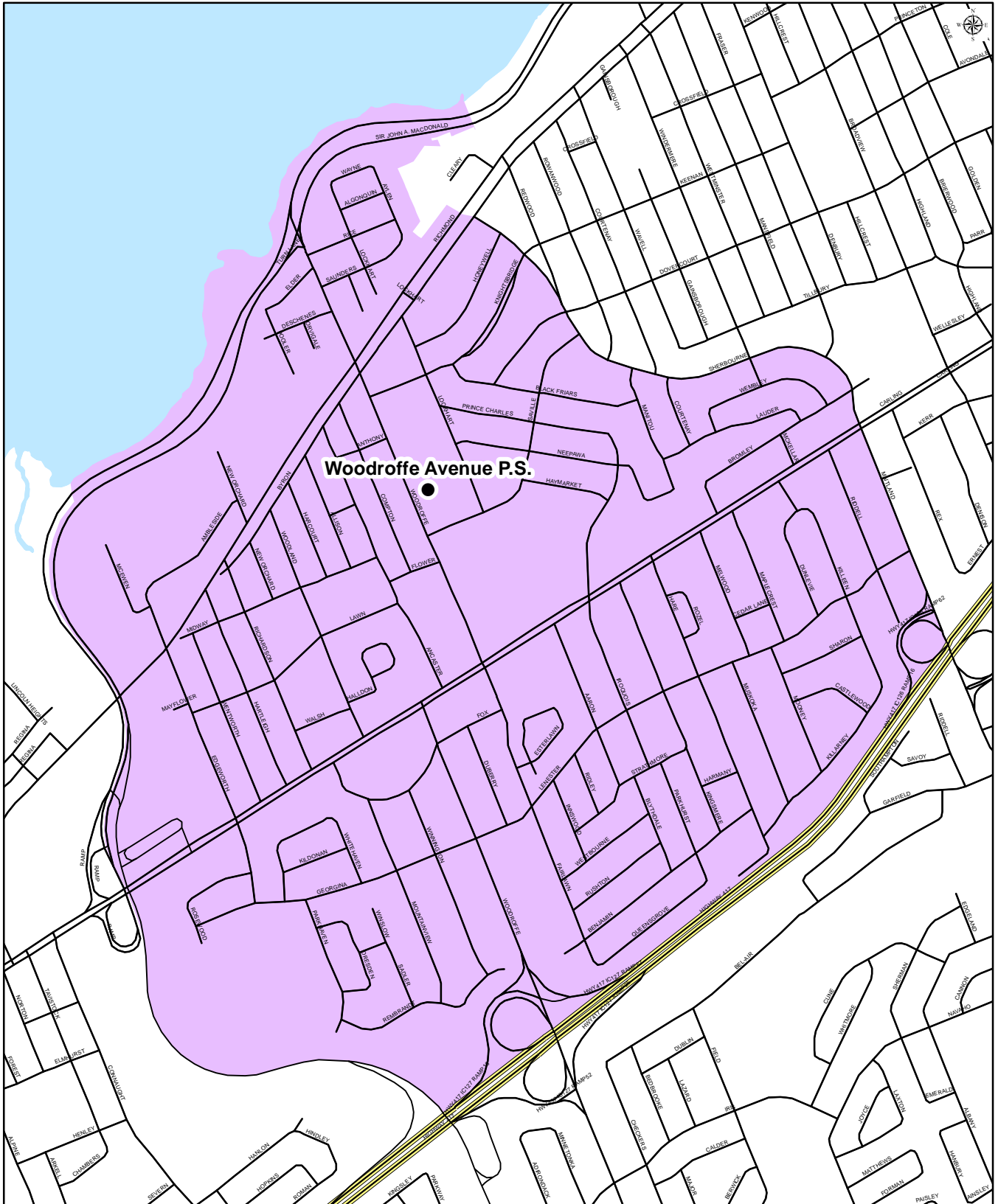
Grade 4 to 6
Middle French Immersion Attendance Boundary



Hilson Avenue Public School
407 Hilson Avenue
Ottawa, Ontario
K1Y 6B9
(613) 728-4607

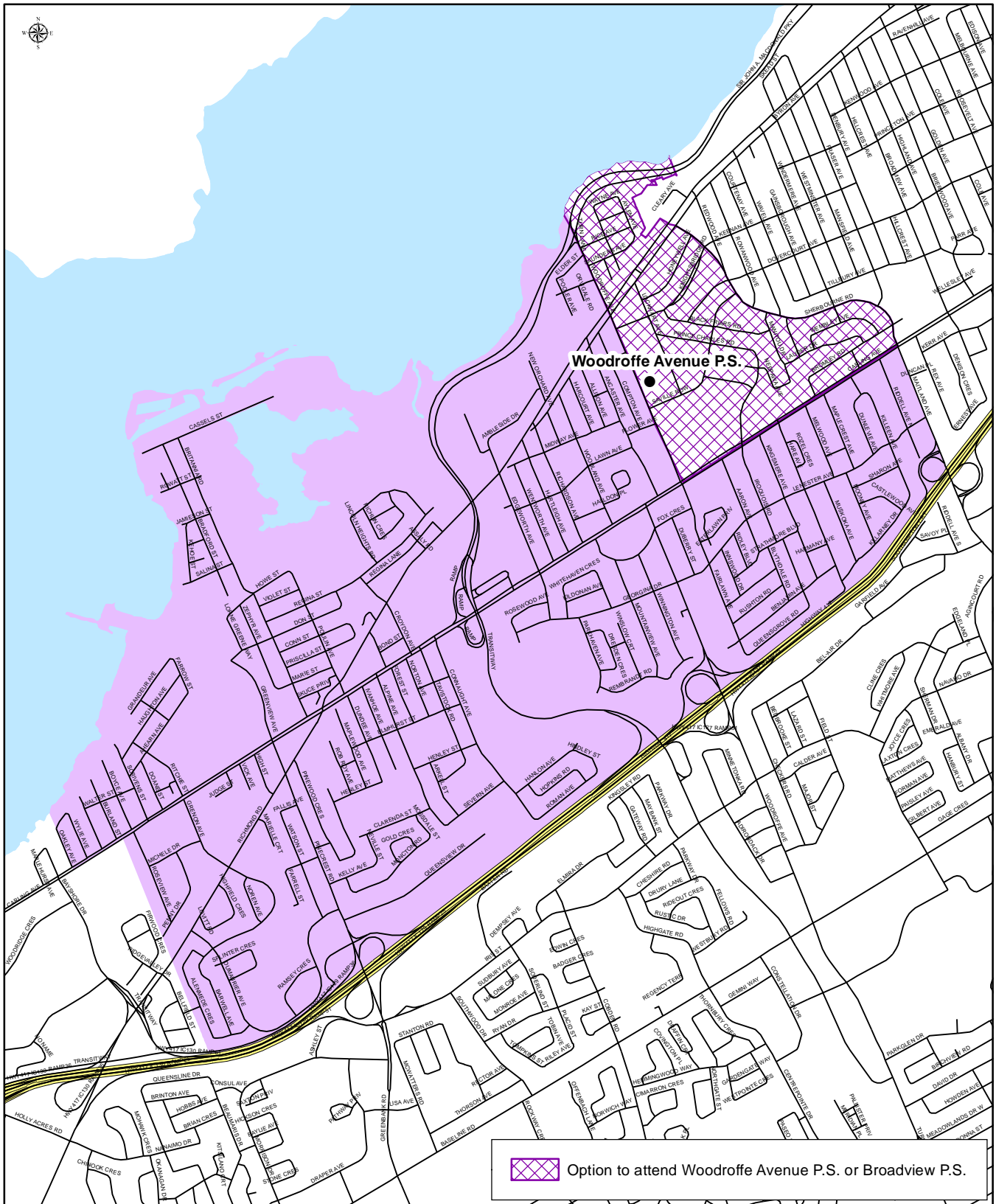
Map is for illustrative purposes only.
For further information, visit www.ocdsb.ca
September 2024

WOODROFFE AVENUE PUBLIC SCHOOL
Junior Kindergarten to Grade 6
Early French Immersion Attendance Boundary



Woodroffe Avenue Public School
235 Woodroffe Avenue
Ottawa, Ontario
K2A 3V3
(613) 722-6585

Map is for illustrative purposes only.
For further information, visit www.ocdsb.ca
September 2017



Woodroffe Avenue Public School
235 Woodroffe Avenue
Ottawa, Ontario
K2A 3V3
(613) 722-6585

Map is for illustrative purposes only.
For further information, visit www.ocdsb.ca
September 2019

School: Broadview

Historical Enrolment - All Programs

Year	JK	SK	1	2	3	4	5	6	7	8	Spec	JK/SK Total	1-6 Total	7&8 Total	TOTAL
2012	57	69	95	87	76	75	60	76	104	98	8	126	469	202	805
2013	57	90	90	92	87	74	77	62	123	106	8	147	482	229	866
2014	61	74	100	88	96	86	74	90	110	127	8	135	534	237	914
2015	73	77	84	99	91	99	87	82	139	115	8	150	542	254	954
2016	74	81	85	82	91	81	99	87	110	142	15	155	525	252	947
2017	77	100	96	98	94	91	76	105	145	119	14	177	560	264	1015
2018	74	89	107	97	102	91	96	81	173	160	15	163	574	333	1085
2019	79	78	93	108	94	87	92	94	119	175	16	157	568	294	1035
2020	47	85	81	92	108	86	82	89	132	117	22	132	538	249	941
2021	50	62	94	87	96	108	86	84	104	134	24	112	555	238	929
2022	54	63	67	95	84	100	106	90	104	102	22	117	542	206	887
2023	64	68	69	67	92	87	99	103	102	114	21	132	517	216	886
2024	57	77	80	68	72	90	88	94	119	105	19	134	492	224	869
2025	67	71	73	83	68	77	93	86	106	122	21	138	480	228	867

Historical Enrolment - Kindergarten

Year	JK	SK	1	2	3	4	5	6	7	8	Spec	JK/SK Total	1-6 Total	7&8 Total	TOTAL
2016	74	81										155			155
2017	77	100										177			177
2018	74	89										163			163
2019	79	78										157			157
2020	47	85										132			132
2021	50	62										112			112
2022	54	63										117			117
2023	64	68										132			132
2024	57	77										134			134
2025	67	71										138			138

Historical Enrolment - English

Year	JK	SK	1	2	3	4	5	6	7	8	Spec	JK/SK Total	1-6 Total	7&8 Total	TOTAL
2012	57	7	18	20	18	28	23	28	57	74	8	64	135	131	338
2013	57	8	9	18	23	14	27	23	45	56	8	65	114	101	288
2014	61	3	15	9	24	22	14	30	37	51	8	64	114	88	274
2015	73	4	6	19	18	28	23	13	39	41	8	77	107	80	272
2016			4	4	15	11	31	22	16	43	15		87	59	161
2017			6	14	12	13	9	36	33	23	14		90	56	160
2018			5	8	19	7	17	12	53	47	15		68	100	183
2019			2	7	15	13	9	17	29	56	16		63	85	164
2020			4	7	8	10	15	11	35	28	22		55	63	140
2021			4	10	12	8	13	16	26	34	24		147	60	147
2022			5	5	8	23	9	15	36	25	22		148	61	148
2023			5	6	8	12	23	15	29	43	21		162	72	162
2024			10	7	7	11	14	24	33	32	19		157	65	157
2025			10	14	5	13	12	15	37	35	21		162	72	162

Historical Enrolment - Early French Immersion

Year	JK	SK	1	2	3	4	5	6	7	8	Spec	JK/SK Total	1-6 Total	7&8 Total	TOTAL
2012	62	77	67	58	47	31	31					62	311	0	373
2013		82	81	74	64	60	50	33	34			82	362	34	478
2014		71	85	79	72	64	60	49	32	33		71	409	65	545
2015		73	78	80	73	71	64	60	53	35		73	426	88	587
2016			81	78	76	70	68	62	62	53			435	115	550
2017			90	84	82	78	67	69	74	62			470	136	606
2018			102	89	83	84	79	69	82	76			506	158	664
2019			91	101	79	74	83	77	72	82			505	154	659
2020			77	85	100	76	67	78	80	73			483	153	636
2021			90	77	84	100	73	68	78	79			492	157	649
2022			62	90	76	77	97	75	68	77			622	145	622
2023			64	61	84	75	76	88	73	71			592	144	592
2024			70	61	65	79	74	70	86	73			578	159	578
2025			63	69	63	64	81	71	69	87			567	156	567

Historical Enrolment - Gifted English

Year	JK	SK	1	2	3	4	5	6	7	8	Spec	JK/SK Total	1-6 Total	7&8 Total	TOTAL
2012							6	17	22	24			23	46	69
2013							0	6	19	25			6	44	50
2014									6	19				25	25
2015									20	5				25	25
2016									6	19				25	25
2017									9	7				16	16
2018									15	9				24	24
2019									7	17				24	24
2020									9	8				17	17
2021										11				11	11
2022															

Historical Enrolment - Gifted Early French Immersion

Year	JK	SK	1	2	3	4	5	6	7	8	Spec	JK/SK Total	1-6 Total	7&8 Total	TOTAL
2012									25	0				25	25
2013									25	25				50	50
2014								11	35	24			11	59	70
2015								9	27	34			9	61	70
2016								3	26	27			3	53	56
2017									29	27				56	56
2018									23	28				51	51
2019									11	20				31	31
2020									8	8				16	16
2021										10				10	10
2022															

School: Churchill

Historical Enrolment - All Programs

Year	JK	SK	1	2	3	4	5	6	7	8	Spec	JK/SK Total	1-6 Total	7&8 Total	TOTAL
2012	50	53	48	55	35	37	40	56				103	271		374
2013	37	45	52	50	56	28	33	39				82	258		340
2014	44	37	48	56	54	36	33	39				81	266		347
2015	27	43	36	47	54	31	43	28				70	239		309
2016	33	28	41	42	48	46	32	42				61	251		312
2017	27	31	24	34	46	40	48	30				58	222		280
2018	29	28	26	28	38	40	44	44				57	220		277
2019	21	25	28	22	34	28	37	42				46	191		237
2020	12	20	21	30	23	27	32	35				32	168		200
2021	12	20	16	25	32	17	29	28				32	147		179
2022	16	15	18	16	31	33	18	33				31	149		180
2023	21	19	17	23	17	35	33	22				40	147		187
2024	19	21	20	15	30	20	39	35				40	159		199
2025	14	27	21	21	14	25	19	37				41	137		178

Historical Enrolment - Kindergarten

Year	JK	SK	1	2	3	4	5	6	7	8	Spec	JK/SK Total	1-6 Total	7&8 Total	TOTAL
2016	33	28										61			61
2017	27	31										58			58
2018	29	28										57			57
2019	21	25										46			46
2020	12	20										32			32
2021	12	20										32			32
2022	16	15										31			31
2023	21	19										40			40
2024	19	21										40			40
2025	14	27										41			41

Historical Enrolment - Alternative English

Year	JK	SK	1	2	3	4	5	6	7	8	Spec	JK/SK Total	1-6 Total	7&8 Total	TOTAL
2012	50	53	48	55	35	37	40	56				103	271		374
2013	37	45	52	50	56	28	33	39				82	258		340
2014	44	37	48	56	54	36	33	39				81	266		347
2015	27	43	36	47	54	31	43	28				70	239		309
2016			41	42	48	46	32	42					251		251
2017			24	34	46	40	48	30					222		222
2018			26	28	38	40	44	44					220		220
2019			28	22	34	28	37	42					191		191
2020			21	30	23	27	32	35					168		168
2021			16	25	32	17	29	28					147		147
2022			18	16	31	33	18	33					149		149
2023			17	23	17	35	33	22					147		147
2024			20	15	30	20	39	35					159		159
2025			21	21	14	25	19	37					137		137

School: Elmdale

Historical Enrolment - All Programs

Year	JK	SK	1	2	3	4	5	6	7	8	Spec	JK/SK Total	1-6 Total	7&8 Total	TOTAL
2012	50	79	70	74	77	70	44	53				129	388		517
2013	44	53	85	63	76	68	67	47				97	406		503
2014	71	60	60	66	60	66	50	56				131	358		489
2015	53	78	63	61	62	58	60	51				131	355		486
2016	61	65	83	61	61	61	55	59				126	380		506
2017	60	70	67	78	59	56	59	59				130	378		508
2018	70	67	78	62	74	60	56	59				137	389		526
2019	60	73	66	75	61	72	54	51				133	379		512
2020	50	63	75	68	70	58	61	48				113	380		493
2021	65	68	81	75	63	69	53	60				133	401		534
2022	67	76	83	78	74	60	67	52				143	414		557
2023	75	71	77	81	76	70	54	67				146	425		571
2024	53	76	82	82	78	73	68	55				129	438		567
2025	60	55	81	81	81	76	75	62				115	456		571

Historical Enrolment - Kindergarten

Year	JK	SK	1	2	3	4	5	6	7	8	Spec	JK/SK Total	1-6 Total	7&8 Total	TOTAL
2016	61	65										126			126
2017	60	70										130			130
2018	70	67										137			137
2019	60	73										133			133
2020	50	63										113			113
2021	65	68										133			133
2022	67	76										143			143
2023	75	71										146			146
2024	53	76										129			129
2025	60	55										115			115

Historical Enrolment - English

Year	JK	SK	1	2	3	4	5	6	7	8	Spec	JK/SK Total	1-6 Total	7&8 Total	TOTAL
2012	50	8	4	6	10	11	12	11				58	54		112
2013	44	3	9	2	8	6	9	13				47	47		94
2014	71											71	0		71
2015	53											53	0		53
2016															
2017															
2018															
2019															
2020															
2021															
2022															
2023															
2024															
2025															

Historical Enrolment - Early French Immersion

Year	JK	SK	1	2	3	4	5	6	7	8	Spec	JK/SK Total	1-6 Total	7&8 Total	TOTAL
2012		71	66	68	67	59	32	42				71	334		405
2013		50	76	61	68	62	58	34				50	359		409
2014		60	60	66	60	66	50	56				60	358		418
2015		78	63	61	62	58	60	51				78	355		433
2016			83	61	61	61	55	59					380		380
2017			67	78	59	56	59	59					378		378
2018			78	62	74	60	56	59					389		389
2019			66	75	61	72	54	51					379		379
2020			75	68	70	58	61	48					380		380
2021			81	75	63	69	53	60					401		401
2022			83	78	74	60	67	52					414		414
2023			77	81	76	70	54	67					425		425
2024			82	82	78	73	68	55					438		438
2025			81	81	81	76	75	62					456		456

School: Fisher Park

Historical Enrolment - All Programs

Year	JK	SK	1	2	3	4	5	6	7	8	Spec	JK/SK Total	1-6 Total	7&8 Total	TOTAL
2012									267	262				529	529
2013									264	277				541	541
2014									273	276				549	549
2015									305	273				578	578
2016									264	305				569	569
2017									284	271				555	555
2018									275	287				562	562
2019									320	275				595	595
2020									276	310	8			586	594
2021									294	264	16			558	574
2022									325	297	15			622	637
2023									309	315	11			624	635
2024									315	303	9			618	627
2025									296	312	12			608	620

Historical Enrolment - English

Year	JK	SK	1	2	3	4	5	6	7	8	Spec	JK/SK Total	1-6 Total	7&8 Total	TOTAL
2012									76	52				128	128
2013									60	79				139	139
2014									57	65				122	122
2015									59	64				123	123
2016									48	56				104	104
2017									54	48				102	102
2018									41	56				97	97
2019									46	48				94	94
2020									48	41	8			89	97
2021									68	60	16			128	144
2022									70	74	15			144	159
2023									57	72	11			129	140
2024									63	56	9			119	128
2025									66	68	12			134	146

Historical Enrolment - Early French Immersion

Year	JK	SK	1	2	3	4	5	6	7	8	Spec	JK/SK Total	1-6 Total	7&8 Total	TOTAL
2012									75	98				173	173
2013									64	72				136	136
2014									64	68				132	132
2015									97	65				162	162
2016									96	101				197	197
2017									108	98				206	206
2018									104	105				209	209
2019									119	105				224	224
2020									104	120				224	224
2021									133	100				233	233
2022									138	133				271	271
2023									141	135				276	276
2024									147	133				280	280
2025									145	145				290	290

Historical Enrolment - Middle French Immersion

Year	JK	SK	1	2	3	4	5	6	7	8	Spec	JK/SK Total	1-6 Total	7&8 Total	TOTAL
2012									23					23	23
2013									24	24				48	48
2014									62	25				87	87
2015									44	51				95	95
2016									38	43				81	81
2017									46	36				82	82
2018									66	46				112	112
2019									58	63				121	121
2020									50	53				103	103
2021									34	42				76	76
2022									49	31				80	80
2023									49	44				93	93
2024									43	50				93	93
2025									38	43				81	81

Historical Enrolment - Gifted Early French Immersion

Year	JK	SK	1	2	3	4	5	6	7	8	Spec	JK/SK Total	1-6 Total	7&8 Total	TOTAL
2012									18	29				47	47
2013									25	23				48	48
2014									17	24				41	41
2015									16	19				35	35
2016									16	15				31	31
2017										17				17	17
2018															
2019															
2020															
2021															
2022															

Historical Enrolment - Alternative

Year	JK	SK	1	2	3	4	5	6	7	8	Spec	JK/SK Total	1-6 Total	7&8 Total	TOTAL
2012									75	83				158	158
2013									91	79				170	170
2014									73	94				167	167
2015									89	74				163	163
2016									66	90				156	156
2017									76	72				148	148
2018									64	80				144	144
2019									97	59				156	156
2020									74	96				170	170
2021									59	62				121	121
2022									68	59				127	127
2023									62	64				126	126
2024									62	64				126	126
2025									47	56				103	103

School: Hilson

Historical Enrolment - All Programs

Year	JK	SK	1	2	3	4	5	6	7	8	Spec	JK/SK Total	1-6 Total	7&8 Total	TOTAL
2012	17	15	23	16	15	51	86	54			20	32	245		297
2013	31	26	21	27	23	41	75	84			20	57	271		348
2014	21	29	28	26	30	56	65	73			19	50	278		347
2015	33	21	27	32	34	68	70	67			20	54	298		372
2016	28	32	27	22	34	64	81	66			11	60	294		365
2017	18	32	33	27	26	62	69	82			12	50	299		361
2018	32	23	34	38	27	44	56	65			11	55	264		330
2019	31	36	24	32	38	54	38	56			24	67	242		333
2020	36	32	38	24	31	55	50	35			26	68	233		327
2021	15	34	24	36	25	43	57	47			27	49	232		308
2022	15	15	29	28	34	46	44	57			28	30	238		296
2023	21	14	10	29	29	45	42	48			26	35	203		264
2024	15	19	19	14	31	39	43	43			27	34	189		250
2025	33	26	20	25	16	46	37	47			26	59	191		276

Historical Enrolment - Kindergarten

Year	JK	SK	1	2	3	4	5	6	7	8	Spec	JK/SK Total	1-6 Total	7&8 Total	TOTAL
2016	28	32										60			60
2017	18	32										50			50
2018	32	23										55			55
2019	31	36										67			67
2020	36	32										68			68
2021	15	34										49			49
2022	15	15										30			30
2023	21	14										35			35
2024	15	19										34			34
2025	33	26										59			59

Historical Enrolment - English

Year	JK	SK	1	2	3	4	5	6	7	8	Spec	JK/SK Total	1-6 Total	7&8 Total	TOTAL
2012	17	15	23	16	15	3	14	10			20	32	81		133
2013	31	26	21	27	23	4	9	13			20	57	97		174
2014	21	29	28	26	30	7	10	10			19	50	111		180
2015	33	21	27	32	34	9	7	11			20	54	120		194
2016			27	22	34	16	8	8			11		115		126
2017			33	27	26	8	18	9			12		121		133
2018			34	38	27	12	9	17			11		137		148
2019			24	32	38	5	11	10			24		120		144
2020			38	24	31	7	10	11			26		121		147
2021			24	36	25	9	10	12			27		116		143
2022			29	28	34	11	11	14			28		127		155
2023			10	29	29	16	11	12			26		107		133
2024			19	14	31	10	17	12			27		103		130
2025			20	25	16	14	11	19			26		105		131

Historical Enrolment - Middle French Immersion

Year	JK	SK	1	2	3	4	5	6	7	8	Spec	JK/SK Total	1-6 Total	7&8 Total	TOTAL
2012						48	49	19					116		116
2013						37	41	47					125		125
2014						49	32	40					121		121
2015						59	43	32					134		134
2016						48	59	36					143		143
2017						54	44	58					156		156
2018						32	47	43					122		122
2019						49	27	46					122		122
2020						48	40	24					112		112
2021						34	47	35					116		116
2022						35	33	43					111		111
2023						29	31	36					96		96
2024						29	26	31					86		86
2025						32	26	28					86		86

Historical Enrolment - Gifted Early French Immersion

Year	JK	SK	1	2	3	4	5	6	7	8	Spec	JK/SK Total	1-6 Total	7&8 Total	TOTAL
2012							23	25					48		48
2013							25	24					49		49
2014							23	23					46		46
2015							20	24					44		44
2016							14	22					36		36
2017							7	15					22		22
2018								5					5		5
2019															
2020															
2021															
2022															

School: Woodroffe

Historical Enrolment - All Programs

Year	JK	SK	1	2	3	4	5	6	7	8	Spec	JK/SK Total	1-6 Total	7&8 Total	TOTAL
2012	81	89	104	78	91	72	66	45				170	456		626
2013	60	89	89	93	71	86	62	57				149	458		607
2014	88	88	90	85	83	68	78	54				176	458		634
2015	82	95	85	80	85	78	61	74				177	463		640
2016	87	93	96	83	73	83	73	56				180	464		644
2017	53	59	59	73	43	65	81	73			12	112	394		518
2018	62	58	65	61	64	38	63	73	68		12	120	364	68	564
2019	48	67	62	66	60	63	40	61	65	66	18	115	352	131	616
2020	50	46	62	57	58	55	57	40	56	66	17	96	329	122	564
2021	48	57	49	56	50	53	47	47	55	53	18	105	302	108	533
2022	57	52	66	45	56	43	53	48	51	56	18	109	311	107	545
2023	39	57	53	62	45	53	44	52	69	51	18	96	309	120	543
2024	47	44	58	56	58	42	53	48	67	66	17	91	315	133	556
2025	40	49	50	52	49	53	43	53	73	64	17	89	300	137	543

Historical Enrolment - Kindergarten

Year	JK	SK	1	2	3	4	5	6	7	8	Spec	JK/SK Total	1-6 Total	7&8 Total	TOTAL
2016	87	93										180			180
2017	53	59										112			112
2018	62	58										120			120
2019	48	67										115			115
2020	50	46										96			96
2021	48	57										105			105
2022	57	52										109			109
2023	39	57										96			96
2024	47	44										91			91
2025	40	49										89			89

Historical Enrolment - English

Year	JK	SK	1	2	3	4	5	6	7	8	Spec	JK/SK Total	1-6 Total	7&8 Total	TOTAL
2012	81											81			81
2013	60											60			60
2014	88											88			88
2015	82											82			82
2016															0
2017											12				12
2018											12				12
2019											18				18
2020											17				17
2021											18				18
2022											18				18
2023											18				18
2024											17				17
2025											17				17

Historical Enrolment - Early French Immersion

Year	JK	SK	1	2	3	4	5	6	7	8	Spec	JK/SK Total	1-6 Total	7&8 Total	TOTAL
2012		89	104	78	91	72	66	45				89	456		545
2013		89	89	93	71	86	62	57				89	458		547
2014		88	90	85	83	68	78	54				88	458		546
2015		95	85	80	85	78	61	74				95	463		558
2016			96	83	73	83	73	56					464		464
2017			59	73	43	65	81	73					394		394
2018			65	61	64	38	63	73	68				364	68	432
2019			62	66	60	63	40	61	65	66			352	131	483
2020			62	57	58	55	57	40	56	66			329	122	451
2021			49	56	50	53	47	47	55	53			410	108	410
2022			66	45	56	43	53	48	51	56			418	107	418
2023			53	62	45	53	44	52	69	51			429	120	429
2024			58	56	58	42	53	48	67	66			448	133	448
2025			50	52	49	53	43	53	73	64			437	137	437

Frequently Asked Questions (FAQ)

The package that was given today outlines a proposal for the accommodation review. The answers to the FAQ are based on the proposed scenarios and are subject to change based on the feedback received.

How do I share feedback and input for the boundary review?

Feedback on the proposal can be provided on Engage OCDSB (engage.ocdsb.ca). The online survey will be open until May 13, 2026.

I have a question about the West Central Schools Review. Whom do I contact?

If you have any questions or require assistance, please contact the OCDSB at westcentralschools.review@ocdsb.ca. For updates about the review and information on consultation opportunities, visit [Engage OCDSB](https://engage.ocdsb.ca).

What will the phasing-in/out schedule look like?

Attendance boundaries in this review are being phased in one year at a time, with the exception of JK and SK, which will transition to the new boundaries simultaneously in the first year.

The Grade 7-8 proposed attendance boundaries do not begin phase-in until 2034, to align with the phase-in of the JK-6 proposed attendance boundaries.

The Middle French Immersion (MFI) program will be phased out as previously approved, one grade per year. The last year of grade 4 intake will be in September 2028. MFI will be fully phased-out by 2033.

The Alternative (ALT) program will be phased out as previously approved, one grade per year. The last year of JK intake was in September 2025. The ALT program will be fully phased-out by 2035.

My child is already in school. Do they have to move?

If your child is already at one of these six schools and will be in SK through grade 8 in 2027, they are not affected by these review changes. They will stay in their current school and program until they graduate.

If your child starts SK in 2027, you have a one-time option. You can choose to remain at your current school or move to your newly designated school based on your home address.

Can my younger child still go to the same school as their older sibling?

If your child starts JK in 2027 and has an older sibling at one of these schools, they can attend that same school. You can also choose to enroll your younger child at the newly designated school based on your home address.

What if my younger child doesn't start school until after 2027?

If your younger child will start school after 2027, they will be assigned to the newly designated school. To have them join an older sibling at a different school, you will need to apply for a cross-boundary transfer.

We are new to the area and don't have kids in school yet. Where does my child go?

If you are new to the area and don't have older children in these schools, your child will attend the school assigned to your address under the new 2027 boundaries.

My child is in JK at Churchill Alternative in 2026. What happens next?

Students currently in JK at Churchill will complete SK there in 2027. For grade 1 in 2028, you have two options: enrol them in the Early French Immersion (EFI) program at Churchill, or move them to your designated English school based on your home address.

We are at Broadview or Elmdale now, but our boundary is changing. What are our options?

If your child is currently in JK at Broadview or Elmdale in 2026, and your home address will be moved to the new Churchill boundary in 2027, you have a one-time choice: you can choose to stay at your current school or move to Churchill for Senior Kindergarten in 2027.

What is the process for Student Transfers, or exemption to/from the schools involved in this accommodation review?

The staff report to the Supervisor will make recommendations for student transfers/exemption for the impacted schools. Where feasible, staff will review opportunities to keep siblings together and to limit the number of school changes students will undergo. Unique personal situations that affect school changes are reviewed through student transfer applications.

Will the bell times change for the schools involved in this review?

The Ottawa-Student Transportation Authority (OSTA) finalizes bell times after the boundary and grade structures are approved. Should there be any changes to the bell times, the OCDSB will share this information with the community.

Where can we learn about school transportation?

OSTA provides school bus transportation across the OCDSB. School bus transportation and eligibility are under the jurisdiction of OSTA. For more information, visit the OSTA website (ottawaschoolbus.ca). More information about school transportation for the new boundaries will be available in mid-August 2027.

Will this material be translated into any other languages?

Information packages are only available in English. However, information posted on the Engage OCDSB website can be translated into multiple languages.

How do we find our child's designated school and register for Kindergarten?

Kindergarten registration for the 2027-2028 school year will open in January 2027. Families will be able to find their designated school and register their child by visiting ocdsb.ca/register.

Our family is new to Canada, new to OCDSB, or returning to the OCDSB. Where can we find support for registering?

Contact our Admissions team at boundaries@ocdsb.ca or call 613-596-8731. For families new to Canada, please contact our Family Reception Centre at familyreceptioncentre@ocdsb.ca or call 613-239-2416.

Will on-site childcare be available at my newly designated school?

Broadview PS: OCDSB Extended Day Program

Churchill AS: OCDSB Extended Day Program

Elmdale PS: Third Party Extended Day Program (Mothercraft)

Hilson PS: Third Party Extended Day Program (Westboro Children's Centre)

For more information about registration, please visit ocdsb.ca/EDP.

Where can we learn about the Extended Day Program (before and after-school child care)?

Extended Day Programs (EDP) provide your child with opportunities to participate in activities that complement the regular school day.

The OCDSB operates the EDP for all children from Kindergarten to grade 6 registered in their designated OCDSB school, where there is sufficient interest within the school community. EDPs are run either by the OCDSB or by a third-party provider in partnership with the OCDSB. Both types of programs are overseen by the OCDSB. Registration for EDP is a separate process from Kindergarten. The EDP is anticipated to be operational by the start of the school year.

Families will be able to add their child's name to the City of Ottawa Child Care Registry waitlist approximately 90 days prior to the expected opening, and registration for the OCDSB-operated EDP is expected to officially commence in the spring. Registration for EDP is a separate process from school registration.

For more information about OCDSB EDP, visit ocdsb.ca/EDP.