

# Executive Report

**Executive Author:** Karyn Carty Ostafichuk - General Manager, Planning

**To:** Supervisor ▾

**Date:** May 22nd, 2026

**Report Category:** Other Fiduciary or Legal Responsibility: ▾

**Report Type:** Public ▾

**Subject:** West Central Schools Elementary Boundary Review - Approval of Revised Program Offerings and Attendance Boundaries

**Report Number:** 26-018

---

## Purpose

1. To obtain Supervisor approval of the revised program offerings and attendance boundaries structures for six schools in the West Central community, as well as other associated changes.

## Context

2. The West Central Schools community comprises of six core schools, consisting of various single-track and dual-track program offerings. The phase-out of the Alternative and Middle French Immersion programs will impact the viability of the schools, operating at low enrolment, while others will be overutilized.

Specifically, the removal of the Alternative Program will lead to a steady decline in student numbers at Churchill Alternative School, eventually leaving a vacant site. Similarly, the Middle French Immersion phase-out will significantly reduce enrolment at Hilson Avenue Public School.

There are several schools that are impacted by this boundary review. These schools are:

- a. Broadview Avenue Public School (grades JK to 8);
- b. Churchill Alternative School (grades JK to 6);

- c. Elmdale Public School (grades JK to 6);
- d. Fisher Park Public School (grades 7 to 8);
- e. Hilson Avenue Public School (grades JK to 6); and
- f. Woodroffe Avenue Public School (grades JK to 8).

## Public Consultation & Feedback

- 3. Planning staff notified impacted parents and guardians, principals, other publicly funded school boards in the jurisdiction, local community associations, City of Ottawa, and the Ministry of Education that the OCDSB initiated a boundary review, as per the consultation timeline.
- 4. All parents/guardians and members of the public were invited to a larger, in-person meeting on May 6th, 2026. At this public meeting, staff presented a proposal regarding the revised attendance boundaries and program offerings to solicit community feedback. Following the presentation from staff, there was an open question and comment period, as well as time for members of the public to discuss the proposal one-on-one with staff, superintendents, and school principals.
- 5. Feedback from the public meeting was gathered through the OCDSB Engage website. An estimate of 200 comments were received and all of these comments have been documented verbatim in a separate communique to the Supervisor.
- 6. Staff have been able to address the majority of the concerns raised during the consultation process, which is reflected in the revised recommendation.
- 7. The major themes identified during the public consultation are detailed in Appendix P.

## Approval Process

- 8. This staff recommendation report will be posted on OCDSB's Engage website for two weeks, prior to a final decision from the Supervisor. The public will have the ability to comment on this recommendation report on the [Engage OCDSB](#) website for that two-week period. Community feedback will be provided to the Supervisor prior to making a decision on this matter.
- 9. If approved by the OCDSB's Supervisor, the attendance boundaries and program offerings and other related impacts for the schools involved, will be communicated to all

who participated in the process, and who/which were originally circulated, for implementation in September 2027.

## The Recommended Plan

### Planning Considerations

10. The proposed boundary review addresses critical enrollment and program shifts. Under the plan, Churchill Alternative School will transition to offer an Early French Immersion (EFI) program, while phasing out the Alternative program. To accommodate this, Churchill's new EFI boundary must be integrated with neighbouring EFI schools. Simultaneously, Hilson Avenue Public School will phase out the Middle French Immersion program. This review plans to address the low-enrolment challenges Hilson PS would face as a single-track English-only school.

### Planning Rationale

11. The recommended JK to 6 Early French Immersion attendance boundary for Churchill Alternative School will redirect the eastern portion of Broadview Avenue Public School's current JK to 8 Early French Immersion attendance boundary to Churchill Alternative School, as well as a small portion of Elmdale Public School's current JK to 6 Early French Immersion attendance boundary. Broadview Avenue Public School is currently over the school capacity, requiring portables on-site to meet the school's instructional needs. Redirecting the east portion of its current JK to 8 Early French Immersion attendance boundary to Churchill Alternative School will reduce its enrolment to better fit the site requirements and student needs.
12. The recommended JK to 6 Early French Immersion attendance boundary for Hilson Avenue Public School will redirect the lower western portion of Elmdale Public School's current JK to 6 Early French Immersion attendance boundary to Hilson Avenue Public School. Elmdale Public School's enrolment has been hovering around its school capacity for the last few years, on the verge of requiring a portable(s) for instructional use. Elmdale Public School's site has minimal portable capacity. By redirecting a portion of its current attendance boundary's geography to Hilson Avenue Public School for Early French Immersion, this will alleviate the student enrolment pressure Elmdale Public School is currently facing.

### Implementation Strategy: JK to 6

13. The implementation of the recommended JK to 6 attendance boundaries for the schools in the review are scheduled to begin phase-in upon September 2027, starting with Junior Kindergarten and Senior Kindergarten, and adding one grade per year until the school's

full grade complement is reached in September 2033. There is one expectation for this timeline:

- a. Hilson Avenue Public School introduces the Early French Immersion program one year ahead of the proposed implementation schedule. That is, in 2027, they will offer Junior Kindergarten, Senior Kindergarten, and Grade 1.
  - i. Many of the current 2025-2026 Junior Kindergarten students made the choice to attend Hilson Avenue Public School with the anticipation that Early French Immersion would be offered in September 2026.
  - ii. To address the feedback received from the public, Hilson Avenue Public School will offer Early French Immersion in 2027 for grade 1.
  - iii. Implementing Early French Immersion at Hilson Avenue Public School a year early requires two "transitional" boundaries. These temporary boundaries will capture students who fall outside the current or recommended attendance boundaries for both Elmdale Public School and Hilson Public School.
  - iv. The temporary attendance boundaries for Elmdale Public School and Hilson Avenue Public School, as per Appendix H and Appendix M to Report No. 26-018, will apply to grade 1 students in 2027, and phase-out one grade per year until they are fully phased-out in 2033.
  - v. Once the transitional attendance boundaries are fully phased-out, Elmdale Public School and Hilson Avenue Public School will be left with their recommended attendance boundaries, as per Appendix G, K, and L to Report No. 26-018.

#### Feeding Pattern Revisions: Grade 7 to 8

14. The recommended revisions to the JK to 6 attendance boundaries for Broadview Avenue Public School, Churchill Alternative School, Elmdale Public School, and Hilson Avenue Public School and their respective programs, results in the opportunity to adjust the Grade 7 to 8 feeding patterns. Broadview Avenue Public School and Fisher Park Public School are the two main feeder schools in this community, while Woodroffe Avenue Public School is impacted peripherally by their Option Area shared with Broadview Avenue Public School. The Grade 7 to 8 attendance boundaries for these schools have been adjusted to better align with the JK to 6 attendance boundaries to improve feeding patterns where possible. The Grade 7 to 8 attendance boundaries will begin implementation in September 3034, and will be fully phased-in by September 2035.

## Implementation Strategy: Grade 7 to 8

15. The revisions to the Grade 7 to 8 feeding patterns for the schools in the review brought an opportunity to adjust the Option Area between Broadview Avenue Public School and Woodroffe Avenue Public School. The Option Area between these two schools has been removed with this recommendation. The geography has been redirected to Woodroffe Avenue Public School to better align with their JK to 6 Early French Immersion attendance boundary. The Grade 7 to 8 attendance boundary will begin implementation in September 2024, and will be fully phased-in by September 2025.

## Sibling Legacy Provisions

16. If a family has a student enrolled at Broadview Avenue Public School, Churchill Alternative School, Elmdale Public School, Fisher Park Public School, Hilson Avenue Public School or Woodroffe Avenue Public School, as of the 2027 implementation year, and has a younger sibling(s), the sibling(s) will be given a one-time option to remain with their older sibling(s) at their respective school, or attend their newly designated school.
17. The Board will provide transportation for the younger sibling(s) until they reach their schools full grade complement, if eligible, based on Ottawa Student Transportation's (OSTA) policies.

## Cross-Boundary Transfer Provisions

18. All students on a Cross-Boundary Transfer at Broadview Avenue Public School, Churchill Alternative School, Elmdale Public School, Fisher Park Public School, Hilson Avenue Public School or Woodroffe Avenue Public School, as of the 2027 implementation year, are permitted to remain at their school.

## Student Enrolment Projections

19. The 2027 to 2029 projections for the West Central Schools are shown in Appendix O. In general, when introducing a new program at a school, staff expect low cohorts for the first few years. At this time, staff cannot account for any younger siblings provisions within the projections until those decisions are made. Staff intends to monitor the viability of the developing cohorts, and adjust the projection numbers accordingly when updated data is available

## Recommendations

20. Staff seek approval for this recommendation report. The proposed plan for this review was received by those in attendance at the Public Consultation Meeting on May 6th 2026, as well as through the Engage website. Staff have revised the original proposal to

address the concerns that were most prevalent from the comments provided in-person, as well Engage Feedback Form. All recommendations would begin to phase-in September 2027. The plan results in a set of recommendations which cover all of the study's key objectives.

21. BE IT RESOLVED THAT the new initiative outlined in Report #26-018 is approved, including:

- a. THAT the revised English Program with Core French attendance boundary for Junior Kindergarten to Grade 6 for Broadview Avenue Public School be approved according to Appendix B to Report No. 26-018. The attendance boundary will begin phasing-in, starting with a grade complement of Junior Kindergarten (JK) and Senior Kindergarten (SK) in 2027 (JK to Grade 1 in 2028, JK to Grade 2 in 2029, and so on), until the attendance boundary is fully phased-in in 2033.
- b. THAT the revised English Program with Core French attendance boundary for Grade 7 to 8 for Broadview Avenue Public School be approved according to Appendix C to Report No. 26-018. The attendance boundary will begin phasing-in upon September 2034, starting with a grade complement of Grade 7, and adding Grade 8 the subsequent year, to be fully phased-in in 2035.
- c. THAT the revised Early French Immersion attendance boundary for Junior Kindergarten to Grade 6 for Broadview Avenue Public School be approved according to Appendix D to Report No. 26-018. The attendance boundary will begin phasing-in, starting with a grade complement of Junior Kindergarten (JK) and Senior Kindergarten (SK) in 2027 (JK to Grade 1 in 2028, JK to Grade 2 in 2029, and so on), until the attendance boundary is fully phased-in in 2033.
- d. THAT the revised Early French Immersion attendance boundary for Grade 7 to 8 for Broadview Avenue Public School be approved according to Appendix E to Report No. 26-018. The attendance boundary will begin phasing-in upon September 2034, starting with a grade complement of Grade 7, and adding Grade 8 the subsequent year, to be fully phased-in in 2035.
- e. THAT the revised Early French Immersion attendance boundary for Junior Kindergarten to Grade 6 for Churchill Alternative School be approved according to Appendix F to Report No. 26-018. The attendance boundary will begin phasing-in, starting with a grade complement of Junior Kindergarten (JK) and Senior Kindergarten (SK) in 2027 (JK to Grade 1 in 2028, JK to Grade 2 in 2029, and so on), until the attendance boundary is fully phased-in in 2033.

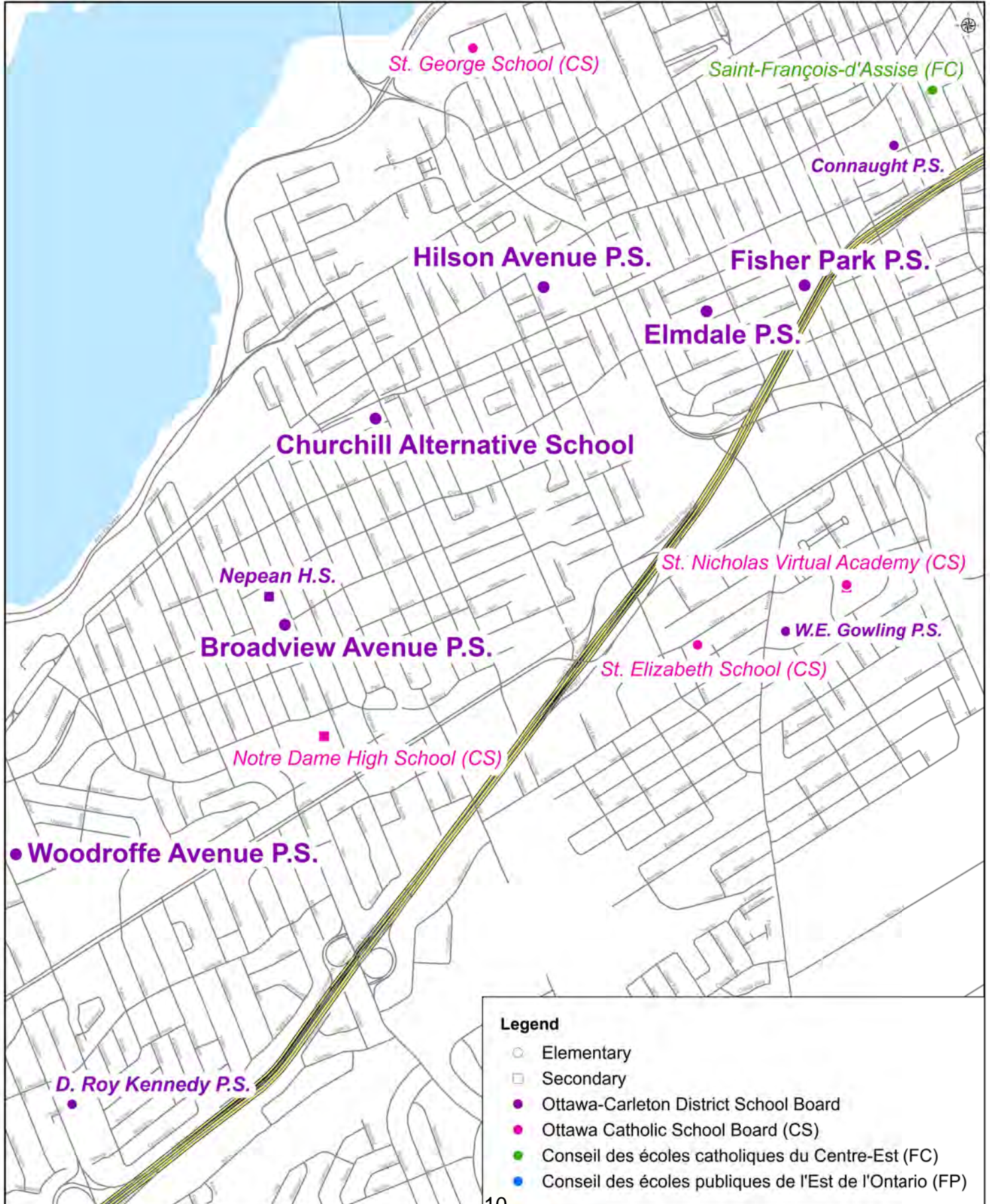
- f. THAT the revised Early French Immersion attendance boundary for Junior Kindergarten to Grade 6 for Elmdale Public School be approved according to Appendix G to Report No. 26-018. The attendance boundary will begin phasing-in, starting with a grade complement of Junior Kindergarten (JK) and Senior Kindergarten (SK) in 2027 (JK to Grade 1 in 2028, JK to Grade 2 in 2029, and so on), until the attendance boundary is fully phased-in in 2033.
- g. THAT the Early French Immersion attendance boundary for Elmdale Public School be approved according to Appendix H to Report No. 26-018. The attendance boundary will begin phasing-in upon September 2027, starting with a grade complement of Grade 1, Grade 2 in 2028, Grade 3 in 2029, Grade 4 in 2030, Grade 5 in 2031, Grade 6 in 2032, and fully phased-out in 2033.
- h. THAT the revised English Program with Core French attendance boundary for Grade 7 to 8 for Fisher Park Public School be approved according to Appendix I to Report No. 26-018. The attendance boundary will begin phasing-in upon September 2034, starting with a grade complement of Grade 7, and adding Grade 8 the subsequent year, to be fully phased-in in 2035.
- i. THAT the revised Early French Immersion attendance boundary for Grade 7 to 8 for Fisher Park Public School be approved according to Appendix J to Report No. 26-018. The attendance boundary will begin phasing-in upon September 2034, starting with a grade complement of Grade 7, and adding Grade 8 the subsequent year, to be fully phased-in in 2035.
- j. THAT the revised English Program with Core French attendance boundary for Junior Kindergarten to Grade 6 for Hilson Avenue Public School be approved according to Appendix K to Report No. 26-018. The attendance boundary will begin phasing-in, starting with a grade complement of Junior Kindergarten (JK) and Senior Kindergarten (SK) in 2027 (JK to Grade 1 in 2028, JK to Grade 2 in 2029, and so on), until the attendance boundary is fully phased-in in 2033.
- k. THAT the revised Early French Immersion attendance boundary for Junior Kindergarten to Grade 6 for Hilson Avenue Public School be approved according to Appendix L to Report No. 26-018. The attendance boundary will begin phasing-in, starting with a grade complement of Junior Kindergarten (JK) and Senior Kindergarten (SK) in 2027 (JK to Grade 1 in 2028, JK to Grade 2 in 2029, and so on), until the attendance boundary is fully phased-in in 2033.
- l. THAT the Early French Immersion attendance boundary for Hilson Avenue Public School be approved according to Appendix M to Report No. 26-018. The attendance boundary will begin phasing-in upon September 2027, starting with a

grade complement of Grade 1, Grade 2 in 2028, Grade 3 in 2029, Grade 4 in 2030, Grade 5 in 2031, Grade 6 in 2032, and fully phased-out in 2033.

- m. THAT the revised Early French Immersion attendance boundary for Grade 7 to 8 for Woodroffe Avenue Public School be approved according to Appendix N to Report No. 26-018. The attendance boundary will begin phasing-in upon September 2034, starting with a grade complement of Grade 7, and adding Grade 8 the subsequent year, to be fully phased-in in 2035.
- n. THAT if a student is in Senior Kindergarten upon September 2027 at one of the six schools involved in this review, they will have a one-time option to remain at their current school, or move to their newly designated school based on their home address.
- o. THAT if a student is in Grade 1 upon September 2027 and resides within the recommended Hilson Public School Early French Immersion attendance boundary, as per Appendix M, they will have a one-time option to remain at Elmdale Public School, or can choose to attend Hilson Avenue Public School.
- p. THAT if a family has a student enrolled at Broadview Avenue Public School, Churchill Alternative School, Elmdale Public School, Fisher Park Public School, Hilson Avenue Public School or Woodroffe Avenue Public School, as of the 2027 implementation year, and has a younger sibling(s), the sibling(s) will be given a one-time option to remain with their older sibling(s) at their respective school, provided the family remains in the original school catchment area, or attend their newly designated school. The Board will provide transportation for the younger sibling(s) until they reach their schools full grade complement, if eligible.

## Appendices

- A. General Location Map
- B. Recommended Attendance Boundary for Broadview Avenue Public School (JK-6 - English Program with Core French)
- C. Recommended Attendance Boundary for Broadview Avenue Public School (Gr 7-8 - English Program with Core French)
- D. Recommended Attendance Boundary for Broadview Avenue Public School (JK-6 - Early French Immersion)
- E. Recommended Attendance Boundary for Broadview Avenue Public School (Gr 7-8 - Early French Immersion)
- F. Recommended Attendance Boundary for Churchill Alternative School (JK-6 - Early French Immersion)
- G. Recommended Attendance Boundary for Elmdale Public School (JK-6 - Early French Immersion)
- H. Recommended Attendance Boundary for Elmdale Public School (Early French Immersion)
- I. Recommended Attendance Boundary for Fisher Park Public School (Gr 7-8 - English Program with Core French)
- J. Recommended Attendance Boundary for Fisher Park Public School (Gr 7-8 - Early French Immersion)
- K. Recommended Attendance Boundary for Hilson Avenue Public School (JK-6 - English Program with Core French)
- L. Recommended Attendance Boundary for Hilson Avenue Public School (JK-6 - Early French Immersion)
- M. Recommended Attendance Boundary for Hilson Avenue Public School (Early French Immersion)
- N. Recommended Attendance Boundary for Woodroffe Avenue Public School (Gr 7-8 - Early French Immersion)
- O. Three Year Projections for Impacted Schools
- P. Public Consultation Feedback

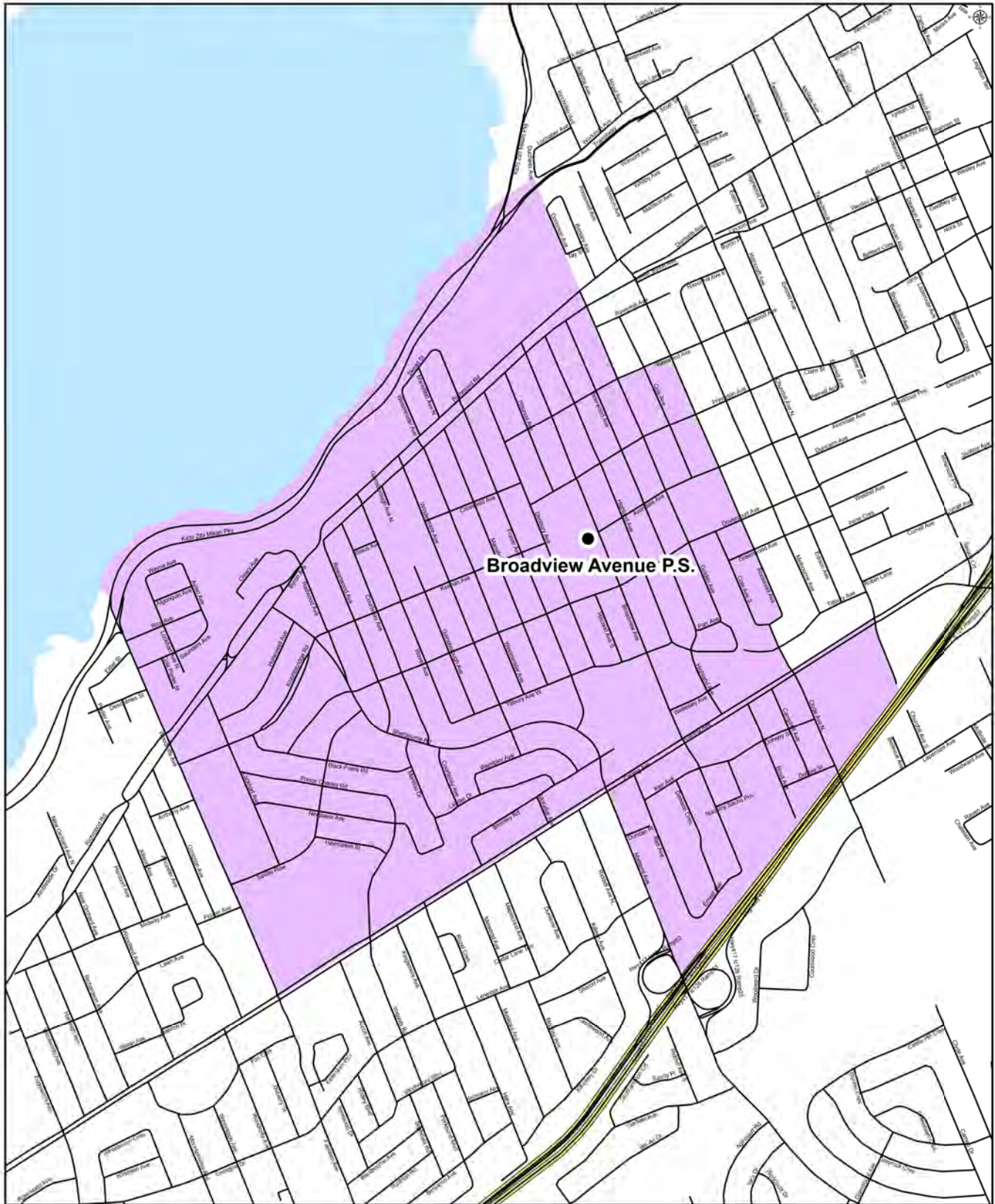




OTTAWA-CARLETON  
DISTRICT SCHOOL BOARD

**BROADVIEW AVENUE PUBLIC SCHOOL**  
Final Staff Recommendation  
Junior Kindergarten to Grade 6  
English Program with Core French Attendance Boundary

APPENDIX B  
to Report 26-018

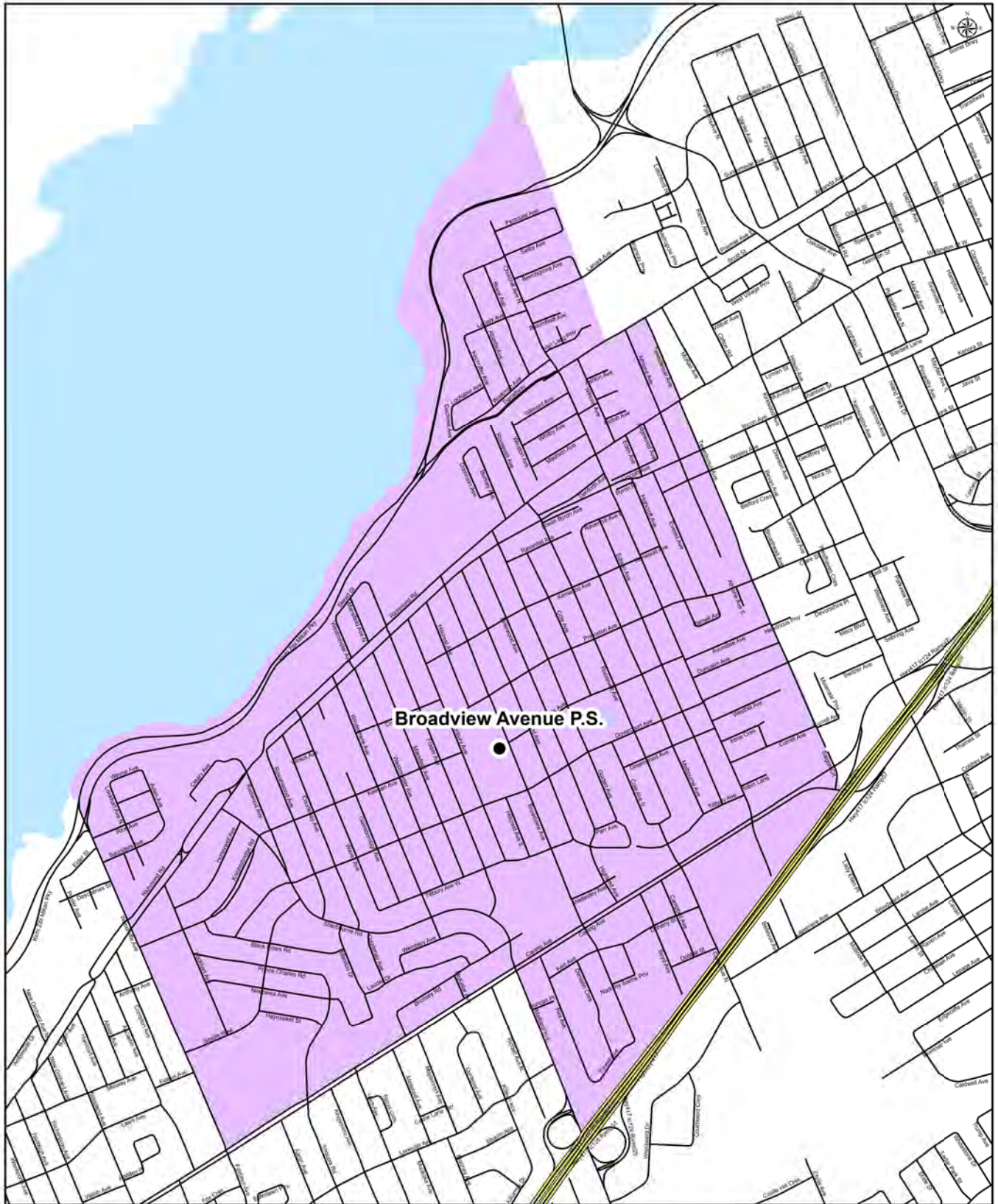




OTTAWA-CARLETON  
DISTRICT SCHOOL BOARD

**BROADVIEW AVENUE PUBLIC SCHOOL**  
Final Staff Recommendation  
Grade 7 to 8  
English Program with Core French Attendance Boundary

APPENDIX C  
to Report 26-018

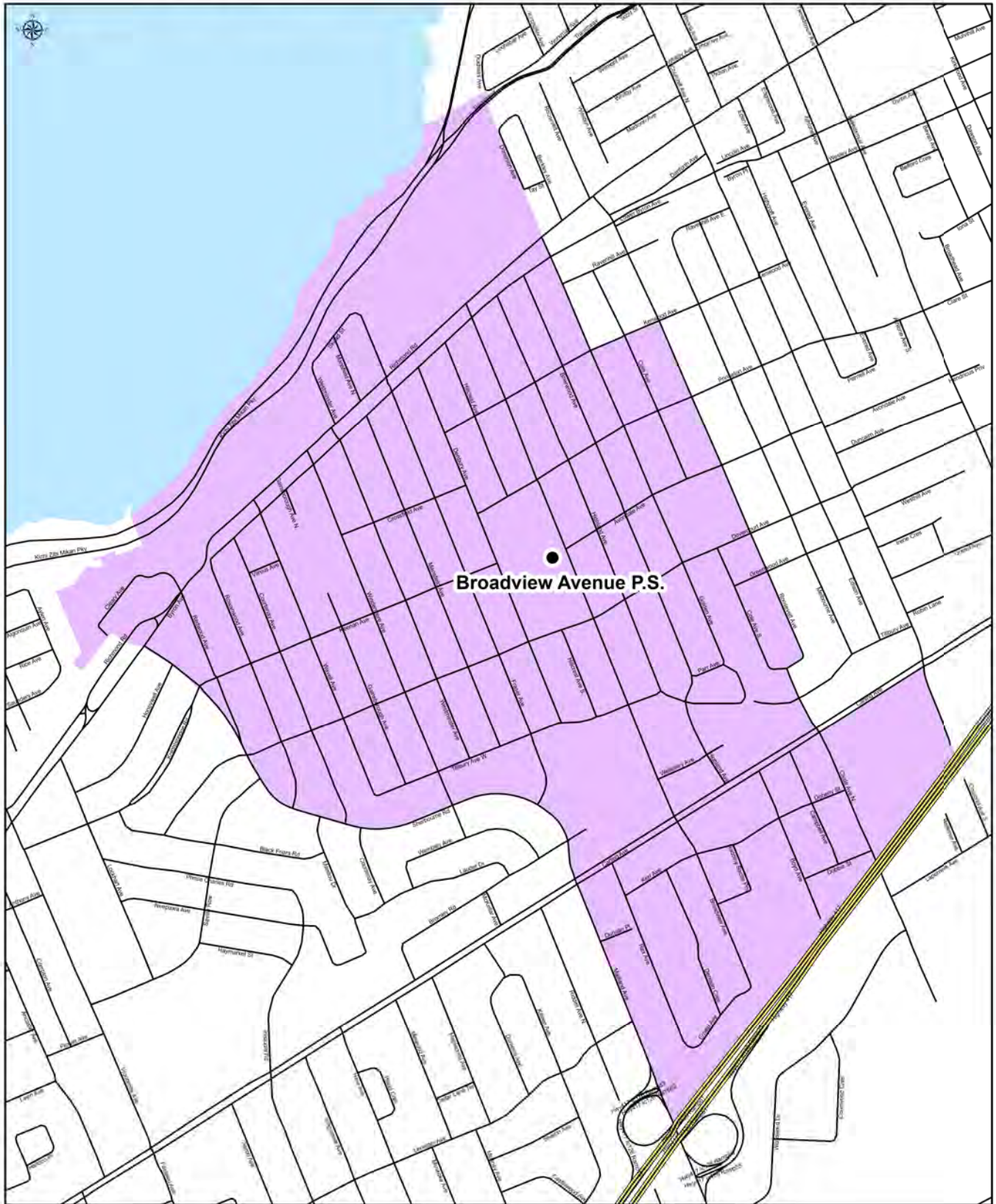




OTTAWA-CARLETON  
DISTRICT SCHOOL BOARD

**BROADVIEW AVENUE PUBLIC SCHOOL**  
Final Staff Recommendation  
Junior Kindergarten to Grade 6  
Early French Immersion Attendance Boundary

APPENDIX D  
to Report 26-018

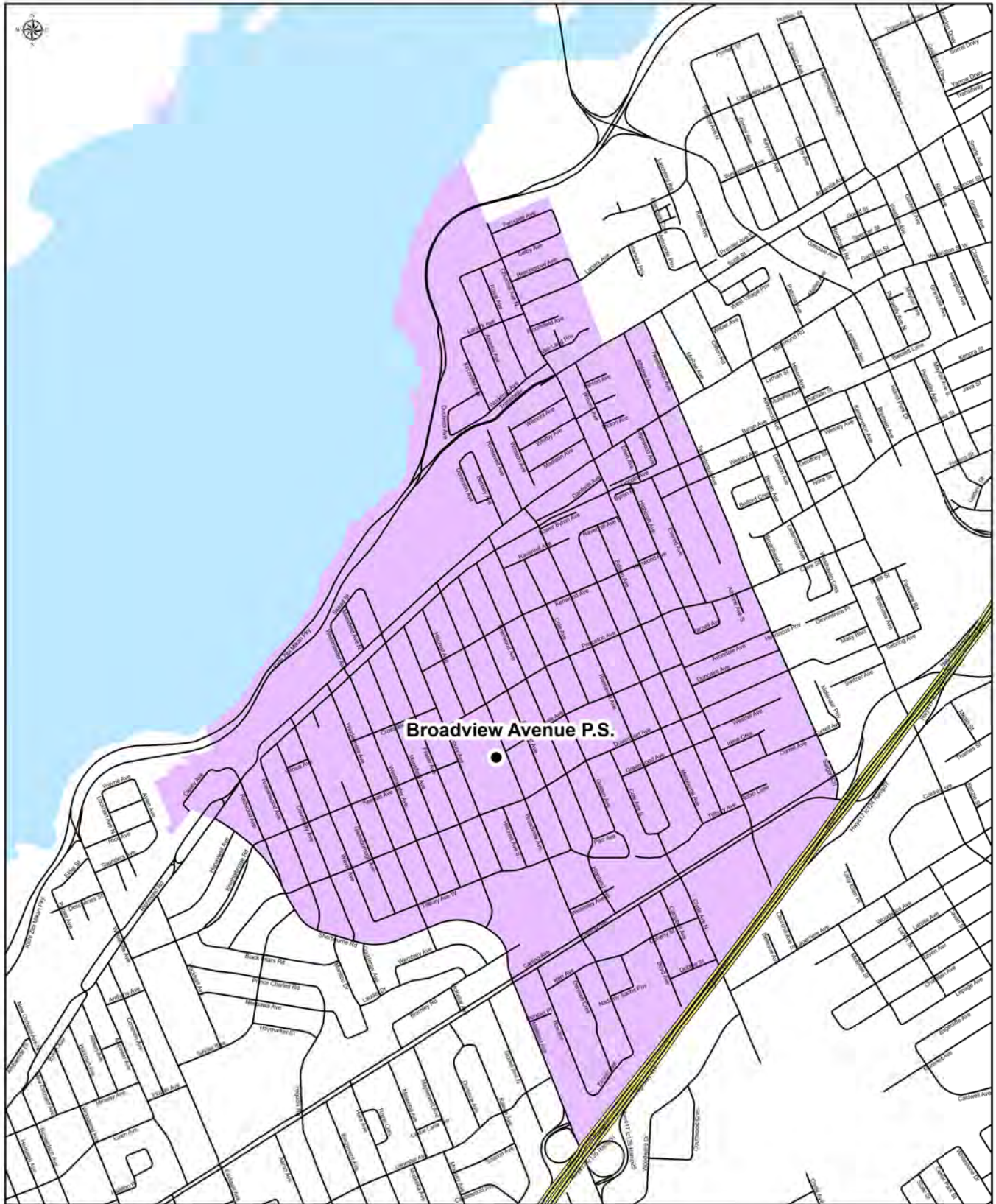




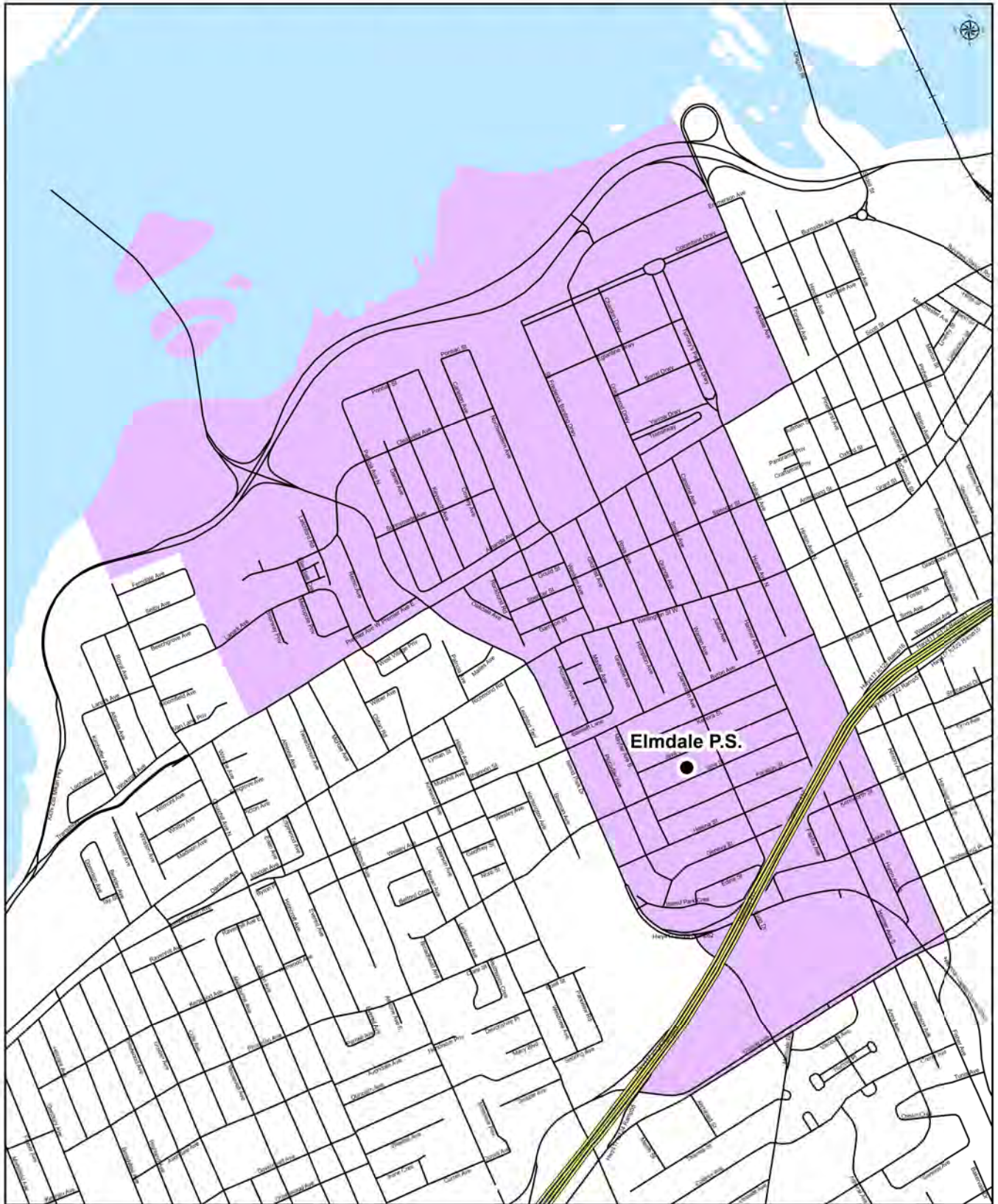
OTTAWA-CARLETON  
DISTRICT SCHOOL BOARD

**BROADVIEW AVENUE PUBLIC SCHOOL**  
Final Staff Recommendation  
Grade 7 to 8  
Early French Immersion Attendance Boundary

APPENDIX E  
to Report 26-018







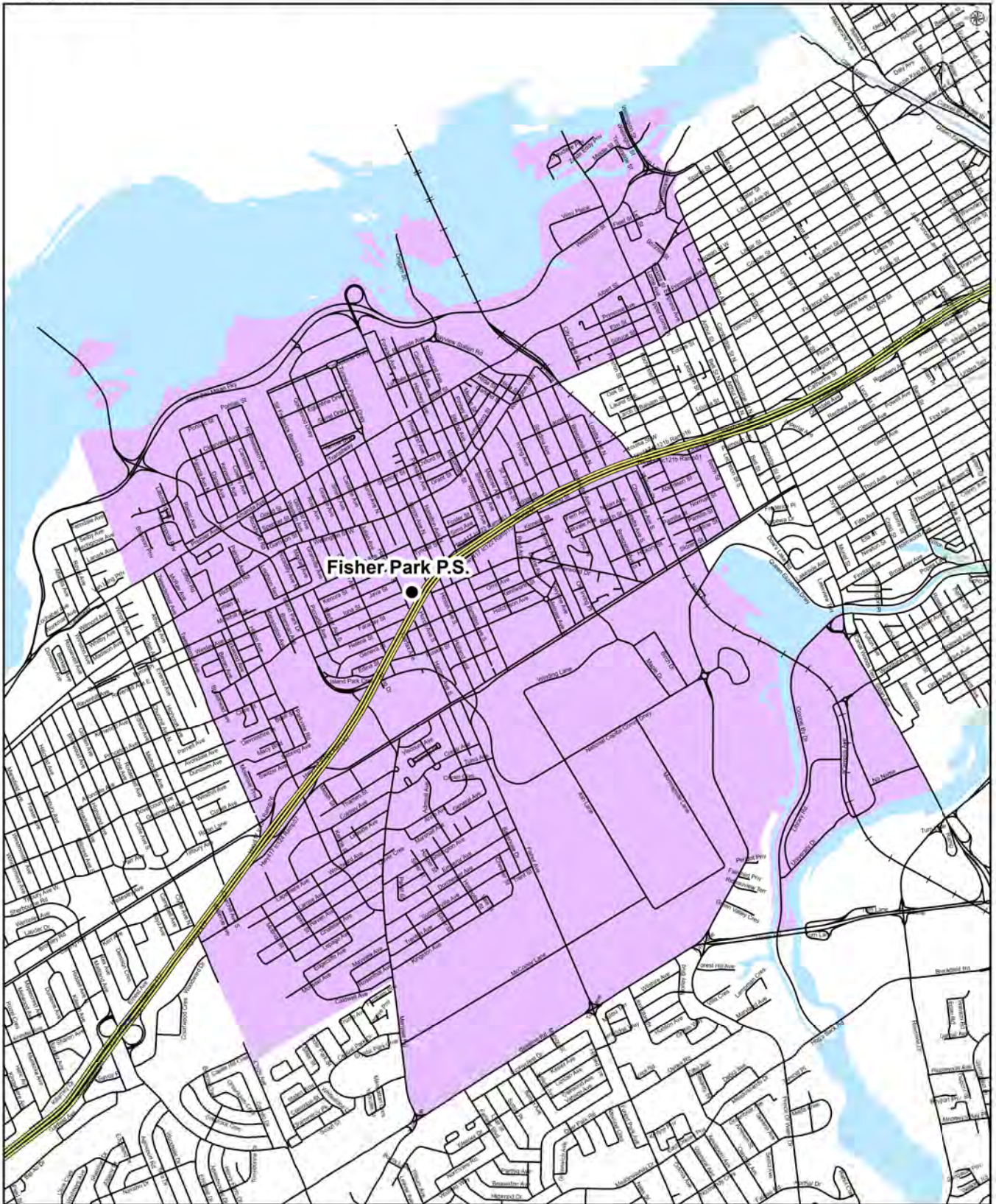


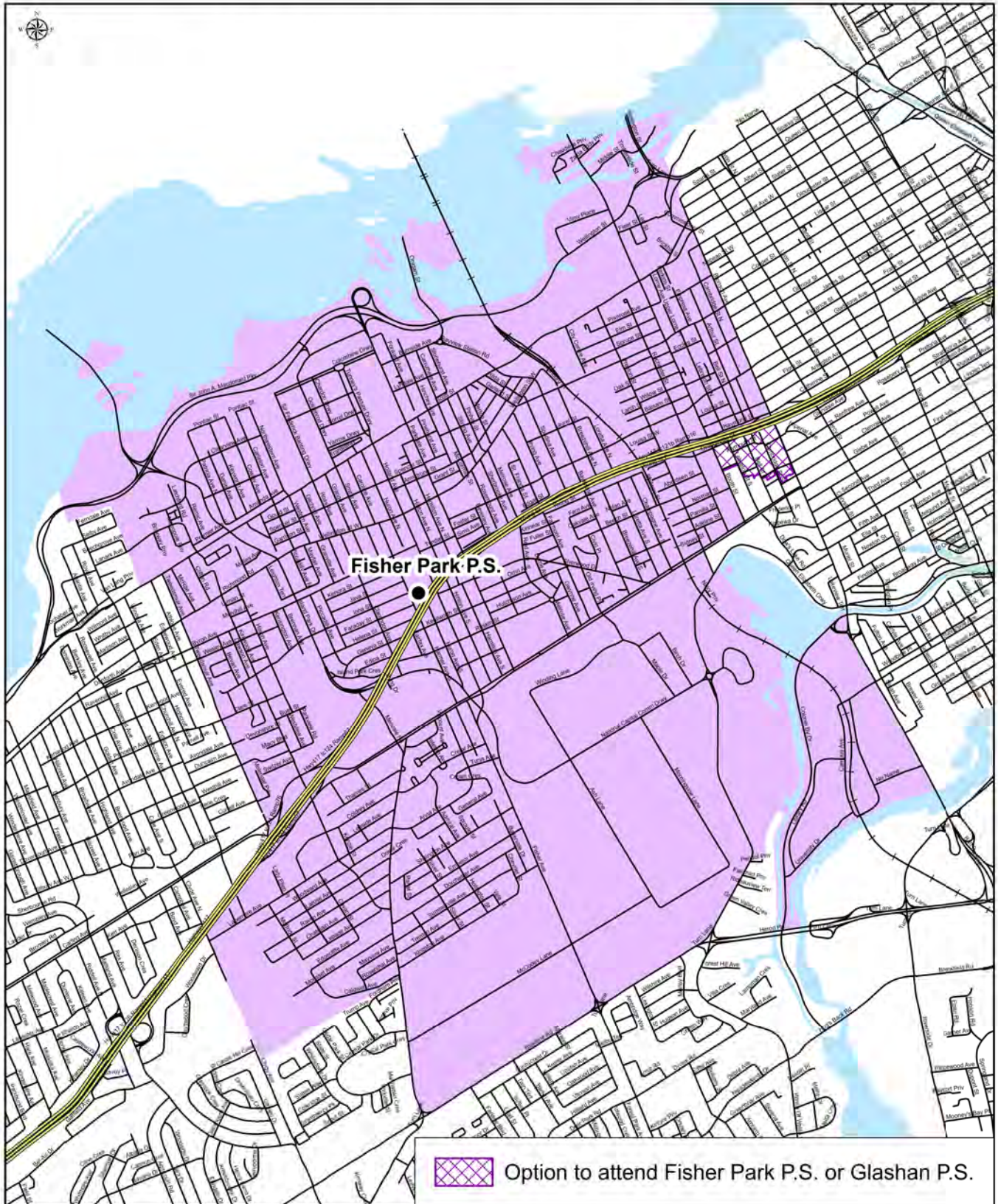


OTTAWA-CARLETON  
DISTRICT SCHOOL BOARD

FISHER PARK PUBLIC SCHOOL  
Final Staff Recommendation  
Grade 7 to 8  
English Program with Core French Attendance Boundary

APPENDIX I  
to Report 26-018



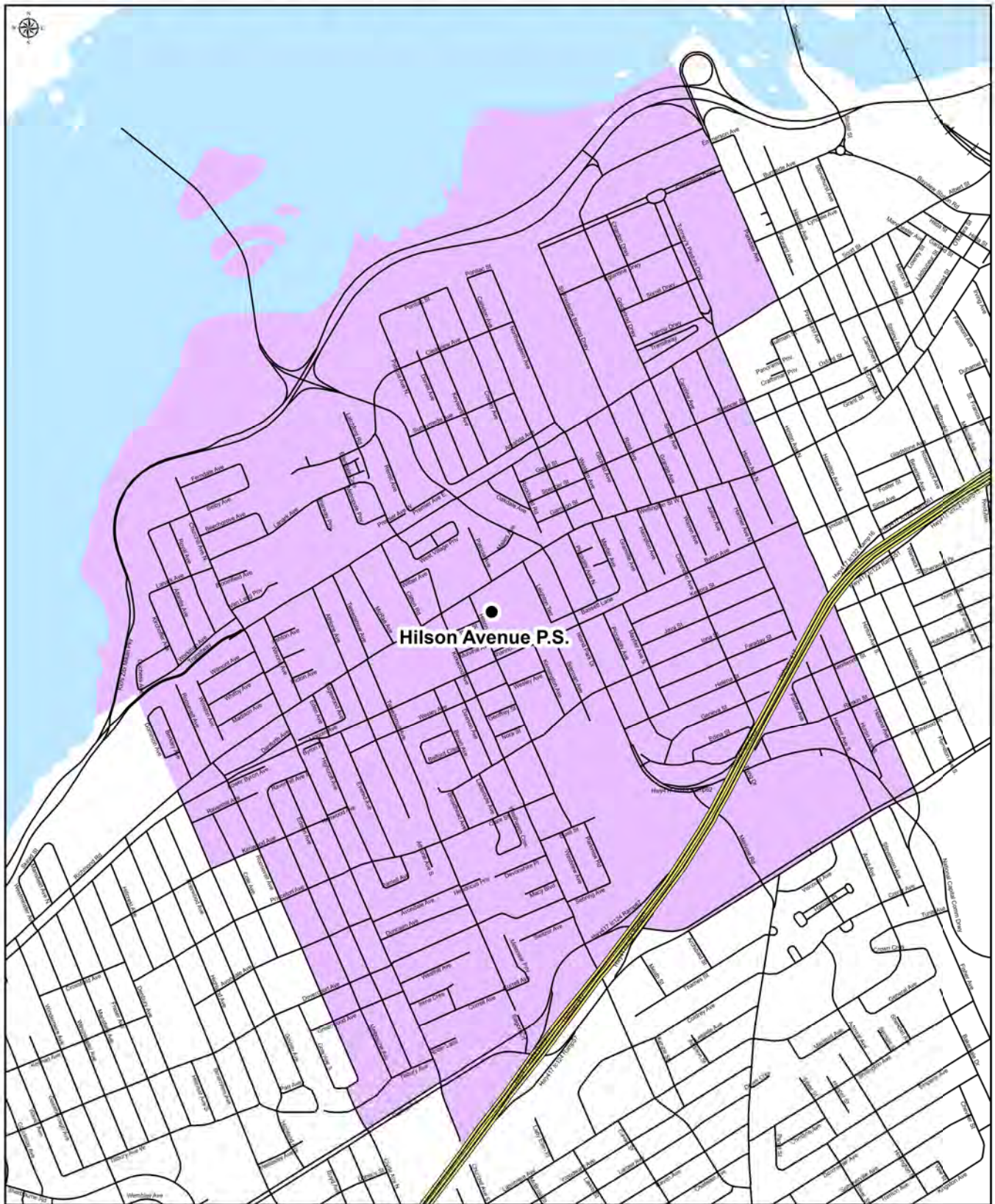




OTTAWA-CARLETON  
DISTRICT SCHOOL BOARD

**HILSON AVENUE PUBLIC SCHOOL**  
Final Staff Recommendation  
Junior Kindergarten to Grade 6  
English Program with Core French Attendance Boundary

APPENDIX K  
to Report 26-018





**Note:** This transitional attendance boundary will begin phasing-in upon September 2027, starting with a grade complement of Grade 1, Grade 2 in 2028, Grade 3 in 2029, Grade 4 in 2030, Grade 5 in 2031, Grade 6 in 2032, and fully phase-out in 2033.

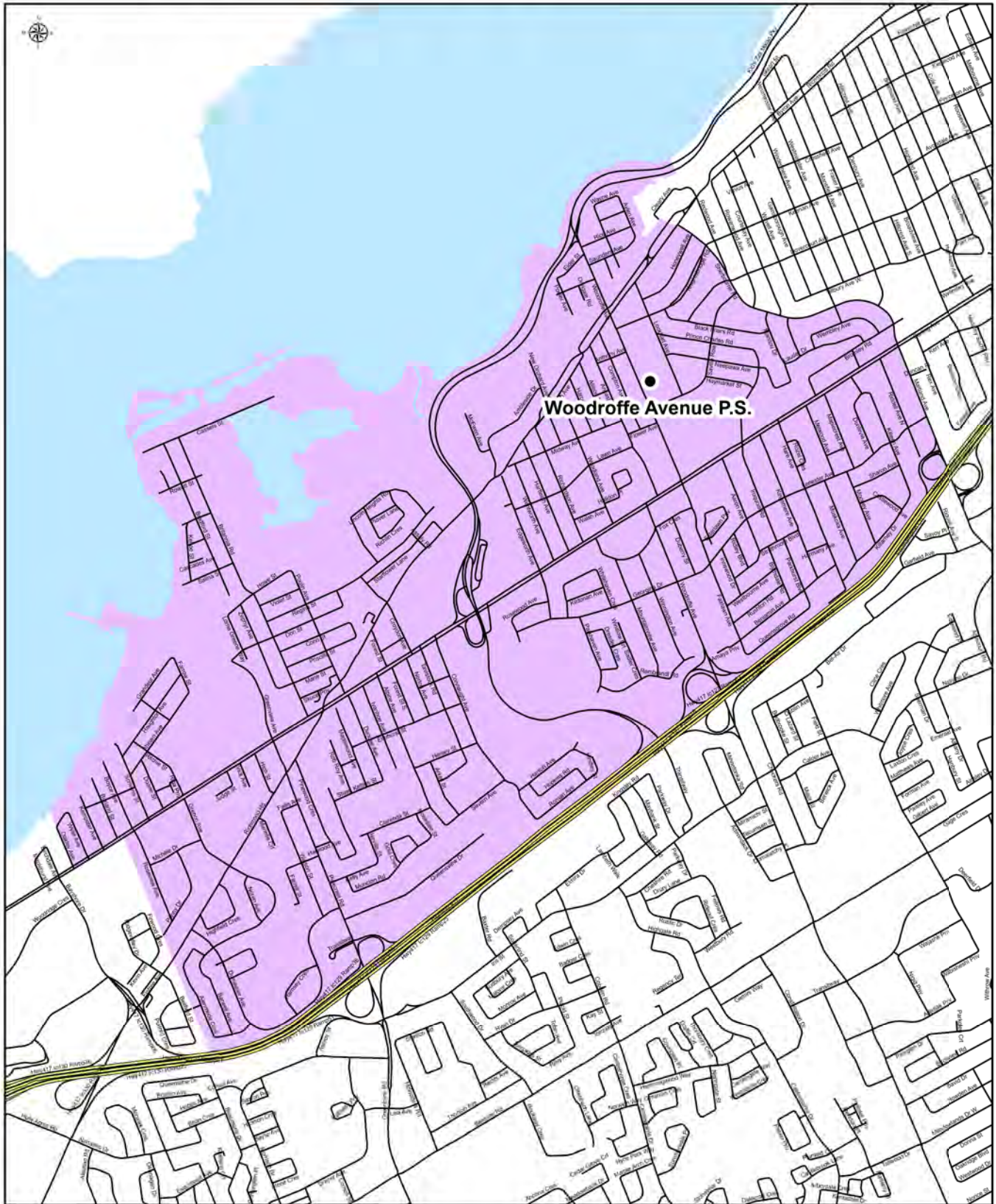




OTTAWA-CARLETON  
DISTRICT SCHOOL BOARD

**WOODROFFE AVENUE PUBLIC SCHOOL**  
Final Staff Recommendation  
Grade 7 to 8  
Early French Immersion Attendance Boundary

APPENDIX N  
to Report 26-018



West Central Schools Boundary Review

2027 Projected Enrolments

| School           | Capacity | Program | JK | SK | 1  | 2  | 3  | 4  | 5  | 6  | 7   | 8   | SE | Total | UF(%)  |
|------------------|----------|---------|----|----|----|----|----|----|----|----|-----|-----|----|-------|--------|
| Broadview PS     | 806      | KGTN    | 42 | 78 |    |    |    |    |    |    |     |     |    | 120   | 102.5% |
|                  |          | ENG     |    |    | 9  | 12 | 17 | 24 | 9  | 17 | 28  | 31  | 21 | 168   |        |
|                  |          | EFI     |    |    | 75 | 66 | 62 | 68 | 61 | 60 | 75  | 71  |    | 538   |        |
|                  |          | Total   | 42 | 78 | 84 | 78 | 79 | 92 | 70 | 77 | 103 | 102 | 21 | 826   |        |
| Churchill AS     | 387      | KGTN    | 25 | 16 |    |    |    |    |    |    |     |     |    | 41    | 41.1%  |
|                  |          | EFI     |    |    |    |    |    |    |    |    |     |     |    | 0     |        |
|                  |          | ALT     |    |    | 14 | 23 | 21 | 21 | 14 | 25 |     |     |    | 118   |        |
|                  |          | Total   | 25 | 16 | 14 | 23 | 21 | 21 | 14 | 25 |     |     |    | 159   |        |
| Elmdale PS       | 591      | KGTN    | 36 | 67 |    |    |    |    |    |    |     |     |    | 103   | 94.6%  |
|                  |          | EFI     |    |    | 68 | 82 | 79 | 78 | 76 | 73 |     |     |    | 456   |        |
|                  |          | Total   | 36 | 67 | 68 | 82 | 79 | 78 | 76 | 73 |     |     |    | 559   |        |
| Fisher Park PS   | 803      | ENG     |    |    |    |    |    |    |    |    | 59  | 82  | 12 | 153   | 74.1%  |
|                  |          | EFI     |    |    |    |    |    |    |    |    | 136 | 136 |    | 272   |        |
|                  |          | MFI     |    |    |    |    |    |    |    |    | 31  | 35  |    | 66    |        |
|                  |          | ALT     |    |    |    |    |    |    |    |    | 44  | 60  |    | 104   |        |
|                  |          | Total   |    |    |    |    |    |    |    |    | 270 | 313 | 12 | 595   |        |
| Hilson PS        | 419      | KGTN    | 57 | 30 |    |    |    |    |    |    |     |     |    | 87    | 70.4%  |
|                  |          | ENG     |    |    | 17 | 26 | 20 | 9  | 7  | 16 |     |     | 26 | 121   |        |
|                  |          | EFI     |    |    | 13 |    |    |    |    |    |     |     |    | 13    |        |
|                  |          | MFI     |    |    |    |    |    | 27 | 17 | 30 |     |     |    | 74    |        |
|                  |          | Total   | 57 | 30 | 30 | 26 | 20 | 36 | 24 | 46 |     |     | 26 | 295   |        |
| Woodroffe Ave PS | 568      | KGTN    | 33 | 44 |    |    |    |    |    |    |     |     |    | 77    | 94.0%  |
|                  |          | EFI     |    |    | 52 | 51 | 45 | 47 | 46 | 55 | 68  | 76  | 17 | 457   |        |
|                  |          | Total   | 33 | 44 | 52 | 51 | 45 | 47 | 46 | 55 | 68  | 76  | 17 | 534   |        |

Utilization (UF%) = Total enrolment/capacity.

Programs: ENG = English Program with Core French, EFI = Early French Immersion, MFI = Middle French Immersion, ALT = Alternative Program, SE = Special Education

West Central Schools Boundary Review

APPENDIX O  
to Report 26-018

2028 Projected Enrolments

| School           | Capacity | Program | JK | SK | 1  | 2  | 3  | 4  | 5  | 6  | 7   | 8   | SE | Total | UF(%)  |
|------------------|----------|---------|----|----|----|----|----|----|----|----|-----|-----|----|-------|--------|
| Broadview PS     | 806      | KGTN    | 43 | 52 |    |    |    |    |    |    |     |     |    | 95    | 100.6% |
|                  |          | ENG     |    |    | 9  | 13 | 14 | 25 | 26 | 11 | 32  | 31  | 21 | 182   |        |
|                  |          | EFI     |    |    | 75 | 73 | 67 | 60 | 67 | 57 | 59  | 76  |    | 534   |        |
|                  |          | Total   | 43 | 52 | 84 | 86 | 81 | 85 | 93 | 68 | 91  | 107 | 21 | 811   |        |
| Churchill AS     | 387      | KGTN    | 26 | 30 |    |    |    |    |    |    |     |     |    | 56    | 42.6%  |
|                  |          | EFI     |    |    | 16 |    |    |    |    |    |     |     |    | 16    |        |
|                  |          | ALT     |    |    |    | 14 | 23 | 21 | 21 | 14 |     |     |    | 93    |        |
|                  |          | Total   | 26 | 30 | 16 | 14 | 23 | 21 | 21 | 14 |     |     |    | 165   |        |
| Elmdale PS       | 591      | KGTN    | 38 | 39 |    |    |    |    |    |    |     |     |    | 77    | 85.8%  |
|                  |          | EFI     |    |    | 59 | 75 | 67 | 77 | 76 | 76 |     |     |    | 430   |        |
|                  |          | Total   | 38 | 39 | 59 | 75 | 67 | 77 | 76 | 76 |     |     |    | 507   |        |
| Fisher Park PS   | 803      | ENG     |    |    |    |    |    |    |    |    | 72  | 62  | 12 | 146   | 74.7%  |
|                  |          | EFI     |    |    |    |    |    |    |    |    | 158 | 134 |    | 292   |        |
|                  |          | MFI     |    |    |    |    |    |    |    |    | 36  | 32  |    | 68    |        |
|                  |          | ALT     |    |    |    |    |    |    |    |    | 52  | 42  |    | 94    |        |
|                  |          | Total   |    |    |    |    |    |    |    |    | 318 | 270 | 12 | 600   |        |
| Hilson PS        | 419      | KGTN    | 59 | 58 |    |    |    |    |    |    |     |     |    | 117   | 75.4%  |
|                  |          | ENG     |    |    | 17 | 18 | 27 | 8  | 9  | 7  |     |     | 26 | 112   |        |
|                  |          | EFI     |    |    | 13 | 13 |    |    |    |    |     |     |    | 26    |        |
|                  |          | MFI     |    |    |    |    |    | 19 | 24 | 18 |     |     |    | 61    |        |
|                  |          | Total   | 59 | 58 | 30 | 31 | 27 | 27 | 33 | 25 |     |     | 26 | 316   |        |
| Woodroffe Ave PS | 568      | KGTN    | 45 | 36 |    |    |    |    |    |    |     |     |    | 81    | 93.1%  |
|                  |          | EFI     |    |    | 47 | 50 | 47 | 42 | 48 | 47 | 84  | 66  | 17 | 448   |        |
|                  |          | Total   | 45 | 36 | 47 | 50 | 47 | 42 | 48 | 47 | 84  | 66  | 17 | 529   |        |

Utilization (UF%) = Total enrolment/capacity.

Programs: ENG = English Program with Core French, EFI = Early French Immersion, MFI = Middle French Immersion, ALT = Alternative Program, SE = Special Education

West Central Schools Boundary Review

APPENDIX O  
to Report 26-018

2029 Projected Enrolments

| School           | Capacity | Program | JK | SK | 1  | 2  | 3  | 4  | 5  | 6  | 7   | 8   | SE | Total | UF(%) |
|------------------|----------|---------|----|----|----|----|----|----|----|----|-----|-----|----|-------|-------|
| Broadview PS     | 806      | KGTN    | 42 | 54 |    |    |    |    |    |    |     |     |    | 96    | 97.0% |
|                  |          | ENG     |    |    | 11 | 13 | 15 | 20 | 27 | 27 | 20  | 36  | 21 | 190   |       |
|                  |          | EFI     |    |    | 45 | 73 | 74 | 65 | 60 | 63 | 56  | 60  |    | 496   |       |
|                  |          | Total   | 42 | 54 | 56 | 86 | 89 | 85 | 87 | 90 | 76  | 96  | 21 | 782   |       |
| Churchill AS     | 387      | KGTN    | 31 | 31 |    |    |    |    |    |    |     |     |    | 62    | 48.8% |
|                  |          | EFI     |    |    | 32 | 16 |    |    |    |    |     |     |    | 48    |       |
|                  |          | ALT     |    |    |    |    | 14 | 23 | 21 | 21 |     |     |    | 79    |       |
|                  |          | Total   | 31 | 31 | 32 | 16 | 14 | 23 | 21 | 21 |     |     |    | 189   |       |
| Elmdale PS       | 591      | KGTN    | 42 | 41 |    |    |    |    |    |    |     |     |    | 83    | 80.5% |
|                  |          | EFI     |    |    | 45 | 60 | 73 | 64 | 77 | 74 |     |     |    | 393   |       |
|                  |          | Total   | 42 | 41 | 45 | 60 | 73 | 64 | 77 | 74 |     |     |    | 476   |       |
| Fisher Park PS   | 803      | ENG     |    |    |    |    |    |    |    |    | 60  | 77  | 12 | 149   | 75.8% |
|                  |          | EFI     |    |    |    |    |    |    |    |    | 159 | 156 |    | 315   |       |
|                  |          | MFI     |    |    |    |    |    |    |    |    | 22  | 37  |    | 59    |       |
|                  |          | ALT     |    |    |    |    |    |    |    |    | 36  | 50  |    | 86    |       |
|                  |          | Total   |    |    |    |    |    |    |    |    | 277 | 320 | 12 | 609   |       |
| Hilson PS        | 419      | KGTN    | 57 | 60 |    |    |    |    |    |    |     |     |    | 117   | 80.9% |
|                  |          | ENG     |    |    | 18 | 18 | 18 | 27 | 9  | 10 |     |     | 26 | 126   |       |
|                  |          | EFI     |    |    | 29 | 13 | 13 |    |    |    |     |     |    | 55    |       |
|                  |          | MFI     |    |    |    |    |    |    | 16 | 25 |     |     |    | 41    |       |
|                  |          | Total   | 57 | 60 | 47 | 31 | 31 | 27 | 25 | 35 |     |     | 26 | 339   |       |
| Woodroffe Ave PS | 568      | KGTN    | 41 | 50 |    |    |    |    |    |    |     |     |    | 91    | 94.7% |
|                  |          | EFI     |    |    | 39 | 45 | 46 | 44 | 42 | 49 | 82  | 83  | 17 | 447   |       |
|                  |          | Total   | 41 | 50 | 39 | 45 | 46 | 44 | 42 | 49 | 82  | 83  | 17 | 538   |       |

Utilization (UF%) = Total enrolment/capacity.

Programs: ENG = English Program with Core French, EFI = Early French Immersion, MFI = Middle French Immersion, ALT = Alternative Program, SE = Special Education

## Public Consultation Feedback

- a. Responses were received expressing an interest in dual-tracking all of the schools involved in this boundary review, similar to what was proposed for the Elementary Program Review - namely the Churchill Alternative School and Elmdale Public School. Staff acknowledge that while dual-tracking schools are ideal, the feasibility of the English with Core French program cohorts would not be viable. Staff will be monitoring the shifts in demographic data within this community following the implementation of this review.
- b. Responses were received expressing concerns with the “gap” in access to French Immersion for the current Junior and Senior Kindergarten students at Hilson Avenue Public School. These students are ahead of the phase-in timeline for the recommended Early French Immersion attendance boundary, and will not be permitted to enter into Middle French Immersion as it will be phasing-out ahead of the year they reach Grade 4.
- c. Responses were received requesting the one-time option sibling allowance to be extended to any younger sibling, regardless of when they reach school-age.
- d. Responses were received expressing concern with the projected enrolment numbers provided in the information package, noting that Hilson Avenue Public School will eventually reach over its school capacity, and therefore require portable accommodations. Staff acknowledge that Hilson Avenue Public School approaches capacity once the Early French Immersion program is fully established at the school. With any boundary and program review, staff aim to create 5-year stability with enrolment period. Staff will monitor the sustainability of the program offerings at each school following the implementation of this review.
- e. Responses were received expressing unease with the projected enrolment numbers provided in the information package, in particular, the underprojection of the Early French Immersion cohorts at Hilson Avenue Public School.
- f. Responses were received expressing concern for those students currently enrolled in childcare; parents/guardians are worried that they would not be able to enroll in childcare at their newly designated school.
- g. Responses were received regarding bell times, and whether or not they will be adjusted. Staff note that bell times are a function of transportation availability and are set by Ottawa Student Transportation (OSTA) and will be communicated as soon as determined.
- h. Responses were received expressing frustration with the lack of transparency regarding the public consultation information package. The late release of the

proposal left families feeling unsettled, not knowing if their children were impacted.

- i. Responses were received expressing concern with the short feedback opportunities. Families suggest extending the comment period so that they feel more heard, and are able to provide meaningful input.